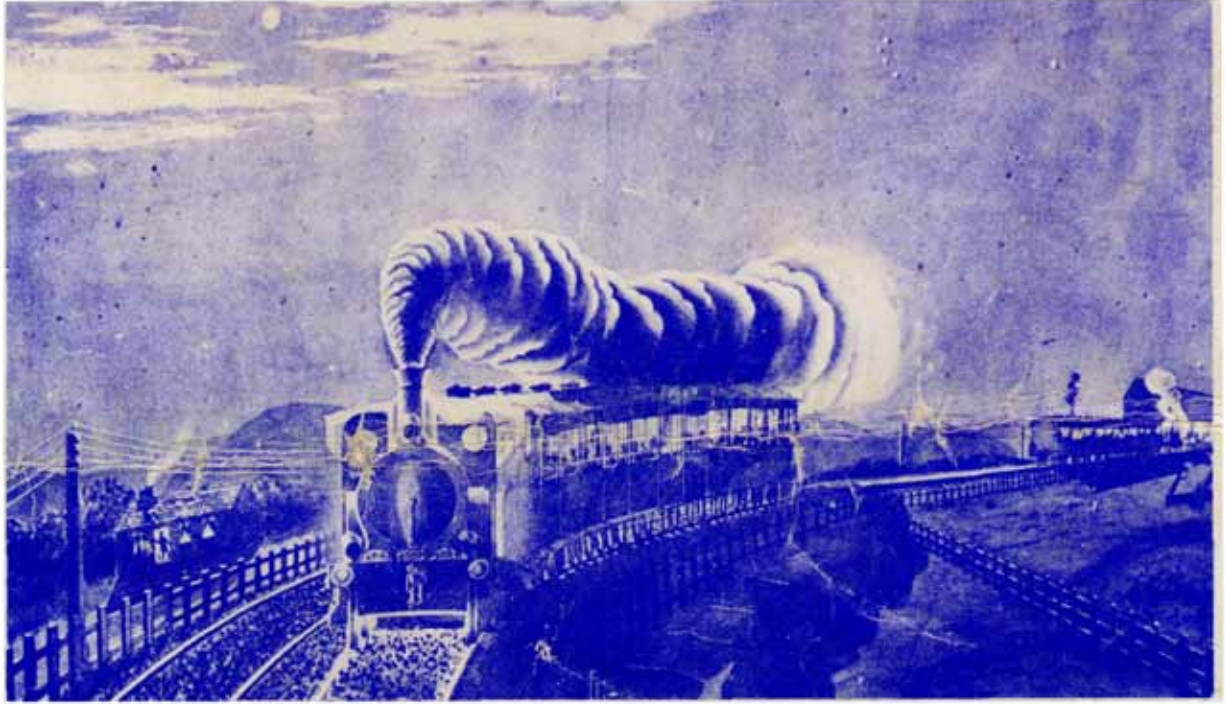




# The Times

September 2004

A journal of transport timetable history and analysis



**'The Night Mail'**



**Inside: 100 years of the L&W R  
Buses from Gordon  
Tweed River Ferries  
Quizzical Kookaburra**

**RRP \$2.95  
Incl. GST**

# The Times

Journal of the Australian Association of Time Table Collectors Inc. (A0043673H)

Print Publication No: 349069/00070, ISSN 0813-6327

September 2004

Issue No. 246 Vol 21 No. 9

## —Contents—

Tasmanian Centenary train timetable	3
Buses south from Gordon	10
Tweed River Ferry timetable	19
Timetable Oddity #8	20

### On the front cover

*One hundred years of the LWR.* "The Night Mail" was an illustration from this month's featured timetable, produced to celebrate the centenary of the Launceston and Western Railway. It reputedly shows a painting made at the time of the first train in 1871. The lower illustration shows one of the centenary trains, No 303 on the first Sunday afternoon of Centenary Week, when a triple-header ran from Launceston to Western Junction, on its way to Deloraine.

It has been a busy time for timetable aficionados in Sydney recently. As detailed in this month's *Table Talk*, the Sydney system's new timetable has aroused much interest and comment, with the Sydney Morning Herald running almost daily news and feature stories. The SMH engaged the services of The Times to prepare a comparative analysis of over 100 years of Sydney suburban timetables. This proved to be rather a big task, but it revealed some fascinating features of train services in this city. For instance, The Times discovered that services on the City Circle before it **was** a circle peaked at 30 trains per hour—a rate even higher than that described in Ross Willson's article here a year or so ago. I hope that we can incorporate the results of this research into a 'historical perspective' article on Sydney timetables in 2005.

**Editorial Team** Geoff Lambert, Victor Isaacs, Duncan MacAuslan.

The Times welcomes articles and letters. Send paper manuscripts or word-processor files on disk or via e-mail to the editor at the address below. Illustrations should be submitted as clean sharp photocopies on white paper or scanned GIF or TIF format images with at least 300 dpi resolution on disk or via e-mail.

**Reproduction** Material appearing in The Times or *Table Talk* may be reproduced in other publications, if acknowledgment is made.

**Disclaimer** Opinions expressed in The Times are not necessarily those of the Association or its members. We welcome a broad range of views on timetabling matters.

**The Times on-line** AATTC's home page: <http://www.aattc.org.au> has colour PDF versions of The Times

<b>President</b>	Graham Duffin	P.O. Box 13074 Brisbane George St. Qld 4003	(07) 3275-1833
<b>Secretary</b>	Steven Haby	PO Box 18049 Collins St East MELBOURNE VIC 8003	(03) 9207-9682 0402 732278
<b>Editor, The Times</b>	Geoff Lambert	179 Sydney Rd FAIRLIGHT NSW 2094 G.Lambert@unsw.edu.au	(02) 9949-3521
<b>Editor, Table Talk</b>	Duncan MacAuslan	19 Ellen St ROZELLE NSW 2039	(02) 9555 2667
<b>Membership Officer</b>	Dennis McLean	53 Bargo St ARANA HILLS Qld 4054	(07) 3351-6496
<b>Webmaster</b>	Lourie Smit	2/82-84 Elouera Rd CRONULLA NSW 2230 lsmit@ozemail.com.au	(02) 9527-6636
<b>Adelaide Convenor</b>	Roger Wheaton	2C Bakewell Street, TUSMORE SA 5065	
<b>Canberra Convenor</b>	Ian Cooper	GPO Box 1533 CANBERRA ACT 2601	(02) 6254-2431
<b>Brisbane Convenor</b>	Brian Webber	8 Coachwood St KEPERA Qld 4054	(07) 3354-2140
<b>Melbourne Convenor</b>	Albert Isaacs	5/22 Burwood Rd HAWTHORN VIC 3122	(03) 9819-5080
<b>Sydney Convenor</b>	Chris London	P.O.Box 6592 PARRAMATTA NSW 2150 toongabbie5808@aol.com	

## Centenary timetable for the Launceston & Western

*None of us were there for the opening of the L&WR, Tasmania's first steam railway but some of us were there for its centenary. Those of us who were, came away clutching a unique timetable. GEOFF LAMBERT reports on the activities and displays his tattered timetable.*

This month it is a century and a half since Australia's first steam train puffed its way from Melbourne to Hobson's Bay. Celebrations are planned. They are unlikely to be as grand as those put on for Tasmania's railway centenary—now itself a third of a century in the past. Australia's state-based railways each celebrated their centenaries in the 1950s, 1960s and 1970s; each was worth going to in its own way. Tasmania, last of all, decided to eclipse the others with a week of celebrations that would see the running of 50 special steam trains over most of its Government lines.

The Tasmanian Transport Commission (which owned the "TGR") formed a special committee and put Mr R. Wyly of the Australian Railway Historical Society in charge. It was probably his chairmanship that accounted for the celebrations taking the form they did. And it is probably his chairmanship that accounted for the publication of what was effectively a Working Time Table booklet for all the trains and which was sold to (mostly) railfans who came to Tasmania to join the celebrations and travel by steam train to places they'd never been (cover, right).

Great were the celebrations when the first line—broad gauge just like Victoria's—was opened on February 10 1873, but they were eclipsed a century later. On the actual centenary day, the Premier, Mr Angus Bethune, would launch the centenary train at Launceston, travel on it to Deloraine and unveil a plaque there. Six special trains—all except the 'Official Train' steam-hauled—ran to Deloraine that day. But trains ran every day from the preceding to the following Sunday. Ostensibly, most of these were provided for parties of schoolchildren to travel to Launceston or Deloraine for the celebrations, but all were open to travel by the public and, in particular, railfans. The Committee had printed "all-lines tickets", a steal at \$7 for a week's



unlimited travel, and advertised them widely in the railway enthusiast press on the mainland. It is estimated that some 200 people bought such tickets.

At the time, TGR still had a rela-

tively large number of steam locomotives on its books, some of them still in occasional use at Hobart, Launceston and Devonport, acting as fill-ins for failed diesels. Never-

*(Continued on page 7)*

**TASMANIAN TRANSPORT COMMISSION**

COMMISSIONER : G. T. Webb  
 ASSOCIATE COMMISSIONER : C. G. Collins  
 ASSOCIATE COMMISSIONER : A. G. Pybus  
 SECRETARY : H. M. Blackwood

**RAILWAY BRANCH**

GENERAL MANAGER OF RAILWAYS : C. G. Collins  
 SECRETARY FOR RAILWAYS : R. G. Barber  
 ADMINISTRATIVE ASSISTANT TO GENERAL MANAGER : J. Duckworth  
 CHIEF ENGINEER : G. J. Dineen  
 CHIEF TRAFFIC MANAGER : R. C. Brazier  
 COMPTROLLER OF STORES : R. C. Manser

**CO-ORDINATING COMMITTEE**

**Launceston Western Railway Centenary Celebrations**

Chairman R. Wylie Australian Railway Historical Society.  
 Secretary A. F. Eastoe Railway Branch, Launceston.  
 Members — R. E. Clarke Tas. Tourist Council, Launceston.  
 W. F. Ellis Queen Victoria Museum, Launceston.  
 I. Mooney Queen Victoria Museum, Launceston.  
 Hon. R. W. Shipp M.L.C., Launceston  
 C. R. Smith Railway Branch, Launceston.  
 K. F. Flood Railway Branch, Launceston.  
 R. E. Fardell Railway Branch, Launceston.  
 R. T. Butler Tasmanian Railways Institute.  
 R. Littlejohn Deloraine.  
 L. Evans Deloraine.  
 L. Hollis Deloraine.

Secretary's Address : Office of the Chief Traffic Manager,  
 Invermay Road, Launceston — Telephone 2 1721, Extension 210  
 Telex AA 58561.

**SPECIAL PASSENGER FARES**

**Return tickets to or from Deloraine Day Trips Only** \$

Launceston	1.00
Longford	0.77
Westbury	0.28
Ulverstone	1.35
Devonport	1.05
Latrobe	0.83
Railton	0.61
Kimberley	0.44

**Return tickets to or from Launceston Day Trips Only.** \$

Ulverstone	2.60
Devonport	2.20
Latrobe	2.00
Railton	1.84
Kimberley	1.68
Deloraine	1.00
Westbury	0.96
Longford	0.50
Western Junction	0.30
Scottsdale	1.29
St. Marys	2.20
Fingal	1.90
Avoca	1.43
Ross	1.38
Campbell Town	1.18

Children 4 years of age and under 16 years of age Half Fare.

Other Special Fares apply for trains organised through Schools.

"All Lines Tickets" available for travel on any train.

- (a) Available from February 7 to February 14, 1971 inclusive @ \$7.50 each.
- (b) Available from February 12 to February 14, 1971 inclusive @ \$4.50 each.

Half Fares do not apply to "All Lines Tickets"

**SUNDAY, FEBRUARY 7, 1971**

	TRAIN 301	TRAIN 303		TRAIN 300	TRAIN 302
	A.M.	P.M.		P.M.	P.M.
Launceston	10.00	1.10	Deloraine	3.30	5.30
St. Leonards	10.08	1.18	Exton	3.38	5.38
Western Junction	10.27	1.37	Westbury	3.49	5.49
Perth	10.36	1.46	Hagley	3.56	5.56
Longford	10.42	1.52	Longford	4.21	6.21
Hagley	11.06	2.21	Perth	—	—
Westbury	11.13	2.30	Western Junction	4.35	6.35
Exton	11.23	2.43	St. Leonards	—	—
Deloraine	11.32	2.50	Launceston	5.00	7.00

**CONSIST OF TRAIN AND BOOKING ARRANGEMENTS.**

**No's. 301 and 300 trains.**

Car Stock SUB. 1, 2 ABL, 1 BBA, 1 DB.

Locomotive MA Class.

Booked by Commercial Travellers' Association.  
 Limited accommodation also provided for "All Line Ticket" holders, but bookings must be made with Secretary, Co-ordinating Committee.

**No's. 303 and 302 trains.**

Car Stock 1 SP, 4 AAR, 3 BBL, 1 AAL, SP.

Locomotives MA, M and CCS Class.

CCS Locomotive assist Launceston to Western Junction Only.

Available for general bookings.

Bookings for party travel to be directed to the Secretary, Co-ordinating Committee.

Other Bookings may be made at Launceston Railway Station or Launceston Tourist Bureau.

**MONDAY, FEBRUARY 8, 1971**

	TRAIN 304	TRAIN 306	TRAIN 308		TRAIN 305	TRAIN 307
	A.M.	A.M.	P.M.		P.M.	P.M.
Ulverstone	8.15	—	5.55	Launceston	1.56	3.30
Leith	8.25	—	—	St. Leonards	2.05	2.26
Devonport	8.42	10.25	6.25	Western Jcn.	2.11	3.58
Spreyton	8.51	—	—	Longford	2.40	4.12
Latrobe	9.00	10.45	—	Bishopsbourne	2.54	—
Railton	—	207	209	Kimberley	—	4.26
Dunorlan	9.16 hld	11.12	—	Railton	—	4.40
Kimberley	9.29	11.25	—	Westbury	3.18	4.48
Dunorlan	—	209	11.50	Exton	3.28	4.59
Lemana Jcn.	10.07	12.01 p.m.	—	Deloraine	3.36	5.07
Deloraine	10.14	12.08	—	Deloraine	3.52 hld	5.22
Deloraine	10.30	12.22	—	Lemana Jcn.	3.59	5.29
Exton	10.37	12.30	—	Dunorlan	4.10	—
Westbury	10.47	12.41	—	Kimberley	4.26	5.40
Hagley	10.54	—	309	Railton	—	5.56
Bishopsbourne	—	12.48	—	Latrobe	4.40	6.09
Longford	11.20	1.02	—	Spreyton	4.55	6.25
Western Jcn.	11.34	1.16	67	Devonport	5.04	6.43
St. Leonards	—	1.30	—	Leith	5.14	6.43
Launceston	11.54	1.35	305	Ulverstone	—	244
		—	—		5.30 hld	—
					5.40	—

**CONSIST OF TRAIN AND BOOKING ARRANGEMENTS.**

**No's. 304 and 305 trains.**

Car Stock 1 SP, 4 AAR, 3 BBL, 1 AAL, 1 SP.

Locomotives 2 H Class.

Booked by Ulverstone Primary School.

Limited accommodation also provided for "All Line Ticket" holders but booking must be made with Secretary, Co-ordinating Committee.

**No's. 306 and 307 trains.**

Car Stock SUB 1, 2 ABL, 1 BBA, 1 DB.

Locomotive M Class.

Booked by Gowrie Park School who will join train at Railton.

Limited accommodation also provided for "All Line Ticket" holders but bookings must be made with Secretary, Co-ordinating Committee.

No. 308 train conveys empty Car Stock Ulverstone to Devonport.

**TUESDAY, FEBRUARY 9, 1971**

TRAIN 310	TRAIN 312	TRAIN 314	TRAIN 309	TRAIN 311
A.M.	A.M.	P.M.	A.M.	P.M.
Devonport 7.05 acc.	10.25	—	Launceston 11.35	3.30
Spreyton 7.23	10.45	—	Western Jcn. 12.03	3.59
Latrobe 7.40	11.02	—	Longford 12.17	4.11
Railton 11.12	—	—	Bishopsbourne 12.31	4.25
Kimberley 7.53	11.25	—	Hagley 12.45	4.38
Dunorlan 8.20 hid.	11.50	—	—	312 4.38
Lemana Jcn. 8.31	12.00 N.	—	Westbury 1.00	4.48
Deloraine 8.38	12.07	—	—	226 4.48
9.00	12.22	3.15	Exton 1.18	4.58
Exton 9.08 hid.	12.30	3.23	Deloraine 1.26	5.07
Westbury 9.18	12.40	3.34	—	5.29
Hagley 9.25	12.47	3.41	Lemana Jcn. 1.26	5.29
9.28	—	—	Dunorlan 1.26	5.29
Bishopsbourne 9.44	1.03	3.55	—	5.40
—	—	4.09	Kimberley 1.26	5.57
Longford 9.56	1.15	3.11	Railton 1.26	6.10
—	—	4.14	Latrobe 1.26	6.26
Western Jcn. 10.10	1.28	4.28	Spreyton 1.26	6.45
—	1.35	67	Devonport 1.26	6.45
St. Leonards 10.32	1.55	4.50	—	244
Launceston 10.32	1.55	4.50	—	—

**CONSIST OF TRAIN AND BOOKING ARRANGEMENTS.**

**No's. 310 and 309 trains.**

Car Stock SUB. 1, 2 ABL, 1 BBA, 1 DB.  
Locomotive M Class.

Booked by Hagley Farm School.

**Note** No. 310 train runs from Devonport to Hagley for positioning of Car Stock. Bookings may be made for single journey Devonport to Hagley and intermediate Station. Return train terminates Deloraine.

**No's. 312 and 311 trains.**

Car Stock 1 SP, 3 AAR, 3 BBL, 1 AAL, 1 SP.  
Locomotive 2 H Class.

Booked by Sheffield Area School.

Limited accommodation also provided for "All Line Ticket" holders but bookings must be made with Secretary, Co-Ordinating Committee.

**No. 314 train.**

Car Stock SUB 1, 2 ABL, 1 BB, 1 DB.  
Locomotive 1 M Class.

Available for general bookings. Passengers from Launceston may travel to Deloraine by Tasman Limited leaving Launceston at 1.10 p.m. and return on No. 314 train.

**SUNDAY, FEBRUARY 14, 1971**

TRAIN 357	TRAIN 362	TRAIN 360
A.M.	P.M.	P.M.
Launceston 9.30	Ross 3.30	—
Western Junction 10.10	Campbell Town 4.00	—
Clarendon 11.10	Conara Junction 4.10	7
—	Western Junction 4.52	—
Conara Junction 12.15	Launceston 5.22	—
Campbell Town 12.15	—	—
Ross 12.15	—	—

**CONSIST OF TRAIN AND BOOKING ARRANGEMENTS.**

Car Stock BB+, 1 Sub 1, 2 ABL, 1 BBA, 1 DB.

Locomotives CCS.23 and 1 MA Class.

Train stops 1 hour at Clarendon on forward journey to permit passengers to inspect Clarendon House.

Reservations may be made at the Launceston Railway Station or Launceston Tourist Bureau.

**Note:** Lunch is available at the Scotch Thistle Inn at Ross, but passengers should make their own arrangements in respect to Bookings of meal.

**RAILWAY EXHIBITION**

An exhibition of Railway equipment both current and historic along with models of Locomotives and a working model Railway will be on display at the Tasmanian Railways Institute, Invermay Road, Launceston.

**TIMES FOR PUBLIC VIEWING**

Sunday	February 7	12.30 p.m.	to	4.30 p.m.
Monday	February 8	10.00 a.m.	to	4.00 p.m.
Tuesday	February 9	10.00 a.m.	to	4.00 p.m.
		6.00 p.m.	to	8.00 p.m.
Wednesday	February 10	10.00 a.m.	to	5.00 p.m.
Thursday	February 11	10.00 a.m.	to	4.00 p.m.
Friday	February 12	10.00 a.m.	to	4.00 p.m.
		6.00 p.m.	to	8.00 p.m.
Saturday	February 13	9.00 a.m.	to	12.00 noon

**WEDNESDAY, FEBRUARY 10, 1971**

TRAIN 316	TRAIN 318	TRAIN 320	TRAIN 322	TRAIN 324	TRAIN 326
A.M.	A.M.	P.M.	P.M.	P.M.	P.M.
Devonport 7.05 acc.	—	—	—	—	—
Latrobe 7.23	—	—	—	—	—
Railton 7.40	—	—	—	—	—
Kimberley 7.53	—	—	—	—	—
Dunorlan 8.20 hid.	—	—	—	—	—
Lemana Jcn. 8.31	—	—	—	—	—
Deloraine 8.38	11.30	2.00	223 3.30	4.15	—
9.00	—	—	3.10	—	—
Exton 9.08 hid.	11.40	2.08	3.18	3.38	321 4.23
Westbury 9.18	11.51	2.18	3.19	3.43	3.53 4.34
Hagley 9.25	11.58	2.25	3.15	3.35	4.00 4.41
—	12.14	2.35	—	—	—
Bishopsbourne 9.39	12.18	2.49	3.17	3.21	3.46 4.55
—	—	2.59	—	—	—
Longford 9.53	12.32	3.13	3.13	3.58	4.28 5.09
Western Jcn. 10.07	12.46	3.19	3.27	4.13	4.42 5.23
—	12.50	—	—	—	—
Launceston 10.30	1.10	3.50	4.35	5.05	5.45 3
—	—	67 hid	—	—	—
Launceston 8.45	11.00	11.25	12.20	1.55	2.05
St. Leonards 11.00	—	—	—	2.15	2.26
Western Jcn. 9.10	11.25	11.50	12.47	3.18	2.33
—	—	—	1.02	—	—
Longford 9.24	11.39	12.04	1.17	2.26	2.47
—	—	—	1.33	—	—
Bishopsbourne 9.38	11.51	12.17	1.47	3.02	3.20
9.44	316	—	318	—	—
Hagley 9.59	12.03	12.36	2.01	3.16	—
—	—	—	—	—	—
Westbury 10.06	12.10	12.43	2.08	3.23	3.22
—	—	—	2.20	3.20	—
Exton 10.18	12.22	12.53	2.32	3.42	3.24
—	—	12.57	2.26	—	—
Deloraine 10.26	12.30	1.05	3.20	2.40	3.50

**CONSIST OF TRAIN AND BOOKING ARRANGEMENTS.**

**No's. 316 and 317 trains.**

Car Stock 1 SP, 3 AAR, 3 BBL, 1 AAL, 1 SP.  
Locomotives 2 H Class.

Booked by Deloraine Primary School and Our Lady of Mercy College, Deloraine.

**Note** No. 316 train runs from Devonport to Deloraine for positioning of Car Stock. Bookings on this train may be made for single journeys Devonport to Deloraine Only.

**No's. 313 and 318 trains.**

Car Stock 1 SP, 4 SS, 1 SSS, 2 AAL, 1 SSD.  
Locomotives 1 MA and 1 M Class.

Booked by Charles Street State School, Launceston.

Limited Accommodation available for "All Line Ticket" holders but bookings must be made with Secretary, Co-Ordinating Committee.

**No. 315 train.**

Car Stock DA, 2 ACS.  
Locomotive "Y" Class. Diesel Electric.  
Reserved for Special Guests.

**No. 319 train — Special Centenary Train.**

Car Stock BB+, SUB1, 2 ABL, 1 BBA.  
Locomotives CCS.23 and MA Class.  
Vintage Train, by invitation only.

**No's. 321 and 326 trains.**

Car Stock 1 SP, 4 SS, 1 SSS, 2 AAL, 1 SSD.  
Locomotives 1 MA and 1 M Class.

Available for General Bookings.

Party Bookings to be directed to Secretary of Co-Ordinating Committee. Other Bookings may be made at the Launceston Railway Station and Launceston Tourist Bureau.

**No. 320 train.**

Car Stock 1 SP, 3 AAR, 3 BBL, 1 AAL, 1 SP.  
Locomotives 2 H Class.

Available for general booking single journey Deloraine to Launceston and intermediate Stations Only.

**No. 322 train.**

Car Stock DA, 3 ACS Cars.  
Locomotive "Y" Class Diesel Electric.

By invitation only. Return journey from No. 319 train.

**No. 324 train.**

Car Stock BB+, Sub 1, 2 ABL, 1 BBA.  
Locomotives CCS.23 and MA Class.

Available for limited bookings at Launceston and Deloraine Railway Stations. Passengers from Launceston may travel to Deloraine by Tasman Limited leaving Launceston at 1.10 p.m. and return by No. 324 train.

**THURSDAY, FEBRUARY 11, 1971**

**WESTERN LINE :**

	TRAIN 323	TRAIN 325	TRAIN 327
	A.M.	A.M.	P.M.
Launceston	8.30	10.20	1.55
St. Leonards	—	—	2.05
			2.12
Western Junction	8.57	10.45	2.29
Longford	9.11 SHTR. 9.26 hld.	11.00	2.43
Bishopsbourne	9.40	11.14	2.57
Hagley	9.54	11.27	3.11
Westbury	10.01	11.34	3.18
Exton	10.13	11.44	3.30
		11.49	—
Deloraine	10.21	11.57	3.38
		2.26	2.34 hld.

	TRAIN 328	TRAIN 330	TRAIN 332
	A.M.	P.M.	P.M.
Deloraine	11.35	1.10	4.10
Exton	11.45	1.18	4.20
Westbury	11.57	1.30	4.31
Hagley	12.04	1.37	4.38
Bishopsbourne	12.18	1.51	4.52
		2.05	—
Longford	12.32	2.13	5.06
		2.27	2.23
Western Junction	12.46	2.30	5.20
St. Leonards	—	—	—
Launceston	1.08	2.52	5.42
	67		3

**NORTH EASTERN LINE :**

	TRAIN 329	TRAIN 331	TRAIN 334	TRAIN 336
	A.M.	P.M.	A.M.	P.M.
Launceston	5.00	1.30	9.30	4.30
Mowbray	—	—	—	—
Karoala	5.55 } 6.10 }	2.20 } 2.32 }	Nabowla	9.52 } 4.55 }
Lilydale	6.30	2.50	Lebrina	10.25 } 5.50 }
Lebrina	6.55	3.12	Karoala	10.44 } 6.15 }
Nabowla	7.35 } 7.45 }	3.42	Launceston	12.05 } P.M. 7.40 }
Scottsdale	8.20	4.10		

**CONSIST OF TRAIN AND BOOKING ARRANGEMENTS.**

**No's. 323 and 328 trains.**

Car Stock SSD, 1 SSS, 5 SS, 2 AAL, 1 SP.  
Locomotives 1 M and 1 MA Class.

Booked by Cressy and Longford Schools.

Limited Accommodation available for "All Line Ticket" holders only, but Bookings must be made with Secretary, Co-Ordinating Committee.

**No's. 325 and 300 trains.**

Car Stock SP, 4 AAR, 3 BBL, 1 AAL, SP.  
Locomotives 2 H Class.

Booked by Exeter Area School.

Limited Accommodation available for "All Line Ticket" holders only, but Bookings must be made with the Secretary, Co-Ordinating Committee.

**No's. 327 and 332 trains.**

Car Stock SSD, 1 SSS, 5 SS, 2 AAL, 1 SP.  
Locomotives 1 M and 1 MA Class.

Booked by Youngtown State School, Launceston.

Limited Accommodation available for "All Line Ticket" holders and general Public, but Bookings must be made through Secretary, Co-Ordinating Committee.

**No's. 329 and 336 trains.**

Car Stock BB+, Sub 1, 2 ABL, 1 BBA, DB.  
Locomotives CCS.23 and MA.

These trains run for positioning of Car Stock to accommodate Scottsdale bookings, however bookings will be accepted, by Secretary Co-Ordinating Committee from "All Line Ticket" holders and general Public.

**No's. 334 and 331 trains.**

Car Stock BB+, Sub. 1, 2 ABL, 1 BBA, DB.  
Locomotives CCS.23 and MA.

Booked by Ringarooma and Scottsdale Schools.

Limited Accommodation available for "All Line Ticket" holders but reservations must be made with Secretary, Co-Ordinating Committee.

**Note :** No's. 331 and 336 trains may be hauled by MA and M Locomotives

**FRIDAY, FEBRUARY 12, 1971**

**WESTERN LINE :**

	TRAIN 337	TRAIN 343	TRAIN 344	TRAIN 348
	A.M.	P.M.	A.M.	P.M.
Launceston	8.45	1.55	11.35	4.10
St. Leonards	—	2.05	11.43	4.18
		2.12	11.53	4.30
Western Jcn.	9.10	2.30	Hagley	12.00 Noon
Longford	9.24	2.44	Bishopsbourne	12.14
Bishopsbourne	9.38	2.58	Longford	12.28
Hagley	9.52	3.12	Western Jcn.	12.42
Westbury	9.59	3.19	St. Leonards	—
Exton	10.11	3.30	Launceston	1.05
Deloraine	10.18	3.38		5.40

**MAIN LINE :**

	TRAIN 335	TRAIN 338	TRAIN 345	TRAIN 346
	A.M.	P.M.	A.M.	P.M.
Launceston	6.20	92	Ross	8.45
Western Jcn.	6.30	—	Campbell Town	9.00
Conara Jcn.	7.30	TURN	Conara Jcn.	9.15
Campbell Town	7.45	LOCO	Western Jcn.	9.55
Ross	8.05	—	St. Leonards	—
	8.25	—	Launceston	10.15
Launceston	11.50	—	Ross	1.45
St. Leonards	12.00 Noon	—	Campbell Town	2.05
	342	—		2.25
Western Jcn.	12.17	—	Conara Jcn.	3.30
Conara Jcn.	12.57	40	Western Jcn.	4.10
Campbell Town	1.02	—	Launceston	4.35
Ross	1.17	—		
	1.32	—		

**MAIN AND FINGAL LINES :**

	TRAIN 333	TRAIN 342	TRAIN 350	TRAIN 350
	A.M.	A.M.	P.M.	P.M.
Launceston	4.00	—	St. Marys	6.00
Western Jcn.	—	X90 hld.	Fingal	6.10
Powranra	—	X92 hld.	Avoca	6.20
Conara Jcn.	5.20 } 5.45 }	—	Launceston	12.05 } 12.15 }
Avoca	6.30	Pass 171 hld.	Western Jcn.	11.05
Fingal	7.15	—	St. Leonards	11.45
Cullenswood	7.45	TURN	Launceston	12.00 Noon
St. Marys	7.55	LOCO		339
	8.05	—		
Launceston	2.20	226	St. Marys	6.00
Western Jcn.	2.47	—	Cullenswood	6.10
Conara Jcn.	3.27	98	Fingal	6.20
Avoca	3.40	—	Avoca	6.50
Fingal	4.22	—	Conara Jcn.	7.35
St. Marys	5.05	—		3
	5.35	—	Western Jcn.	9.10
			St. Leonards	11.10
			Launceston	11.40

**NORTH EASTERN LINE :**

	TRAIN 340	TRAIN 341	TRAIN 341
	A.M.	P.M.	P.M.
Lilydale	10.45	—	1.30
Karoala	11.05	3.00	—
Mowbray	—	3.20-3.30	—
Launceston	11.55	4.30	7.40

**CONSIST OF TRAIN AND BOOKING ARRANGEMENTS.**

**No's. 333 and 350 trains.**

Car Stock 1 SP, 3 AAL, 1 SS. Locomotive 1 MA Class.

These trains are for positioning of Car Stock to accommodate bookings on Fingal Line. Bookings will be accepted on these trains. No. 350 conveys Passengers Western Junction to Launceston ex Special Aircraft from Melbourne.

**No's. 342 and 345 trains.**

Car Stock 1 SP, 3 AAL, 1 SS. Locomotive 1 MA Class.

Booked by St. Marys and Avoca Schools.  
Limited Accommodation available for "All Line Ticket" holders, but bookings must be made with Secretary, Co-Ordinating Committee.

**No's. 335 and 346 trains.**

Car Stock 1 BB+, 1 Sub, 2 ABL, 1 BBA, 1 DB. Locomotive 1 H Class.

These trains are for positioning of Car Stock to accommodate Bookings from Ross and Campbell Town. Bookings will be accepted on these trains.

**No's. 338 and 339 trains.**

Car Stock 1 BB+, 1 Sub, 2 ABL, 1 BBA, 1 DB. Locomotive 1 H. Class.

Booked by Ross and Campbell Town State Schools.  
Limited Accommodation available for "All Line Ticket" holders, but bookings must be made with Secretary, Co-Ordinating Committee.

**No's. 337 and 344 trains.**

Car Stock 1 SP, 4 AAR, 3 BBL, 1 SP. Locomotives 1 H and 1 MA Class.

Booked by Kings Meadows and Mowbray Heights Schools, Launceston.  
Limited Accommodation available for "All Line Ticket" holders, but bookings must be made with Secretary, Co-Ordinating Committee.

**No's. 343 and 348 trains.**

Car Stock 1 SP, 4 AAR. Locomotive 1 H Class.

Available for general bookings.  
Party bookings to be directed to the Secretary, Co-Ordinating Committee. Other bookings may be made Launceston Railway Station or Launceston Tourist Bureau.

**No's. 340 and 341 trains.**

Car Stock 1 SSD, 1 SSS, 2 SS. Locomotive 1 M Class.

Booked by Lilydale School.  
Limited Accommodation available for "All Line Ticket" holders, but bookings must be made with Secretary, Co-Ordinating Committee.

**Note :** Car Stock for this train will be placed in position at Lilydale by Normal goods train service.

*1 H, 1 SP, 1 SSS & 2 SS add to 235 Launceston  
2 ABL, 1 BBA, 1 DB*

**SATURDAY, FEBRUARY 13, 1971**

	TRAIN 360 A.M.		Deloraine P.M.		TRAIN 355 P.M.
Devonport	11.45				4.45
Latrobe	12.05				— 236
Railton	12.22		Lemana Junction	4.52	hid.
Kimberley	12.35				5.03
Dunorlan	1.00		Dunorlan	5.20	
	1.11		Kimberley	5.35	
Lemana Junction	1.16		Railton	5.52	
Deloraine	1.25		Latrobe	6.10	
			Devonport		
	TRAIN 347 A.M.	TRAIN 349 A.M.	TRAIN 351 P.M.	TRAIN 353 P.M.	
Launceston	9.00	10.30	12.30	1.55	
St. Leonards	—	—	—	2.05	
Western Junction	9.27	10.57	12.57	2.12	
Longford	9.41	11.07	1.10	2.28	
		11.21		2.42	
Bishopsbourne	9.55	11.35	— 226	2.56	
		11.45	1.24		
Hagley	10.09	11.59	1.38	3.10	
Westbury	10.16	12.07	1.45	3.17	
Exton	10.27	12.19	1.57	3.29	354
		12.28	2.05	3.37	
Deloraine	10.35	— 226			
		1.00			
Lemana Junction	—	1.07	—	—	
		1.25	—	—	
Dunorlan	—	1.40	—	—	
Kimberley	—	2.05	—	—	
Railton	—	2.25	—	—	
	TRAIN 352 A.M.	TRAIN 354 P.M.	TRAIN 356 P.M.	TRAIN 358 P.M.	
Railton	—	—	—	3.00	
Kimberley	—	—	—	3.20	223
				3.35	
Dunorlan	—	—	—	4.05	
Lemana Junction	—	—	—	4.20	
Deloraine	11.00	— 223	4.15	4.27	
		3.15	4.15	5.15	
		3.25	4.23	5.23	
Exton	11.08	— 353	4.23	5.23	
		3.32	4.35	5.35	
Westbury	11.19	3.42	4.42	5.42	
Hagley	11.26	3.49	4.42	5.42	
	11.39	— 349	4.56	5.56	
Bishopsbourne	11.41	4.03	4.56	5.56	
	11.55	4.17	5.10	6.10	
Longford	11.55	4.17	5.10	6.10	
Western Junction	12.08	4.31	5.24	6.10	
St. Leonards	—	—	—	—	
Launceston	12.29	4.53	5.45	6.45	

**CONSIST OF TRAIN AND BOOKING ARRANGEMENTS.**

**No's. 347 and 352 trains.**

Car Stock 1 SP, 4 AAR, 2 BBL.  
Locomotives 2 M Class.

Bookings may be made at Launceston Railway Station or Launceston Tourist Bureau.

**No's. 349 and 358 trains.**

Car Stock 1 BB+, 1 Sub 1, 2 ABL, 1 BBA, 1 DB.  
Locomotive CCS.23 and MA Class.

Bookings may be made at Launceston Railway Station or Launceston Tourist Bureau.

**No's. 351 and 354 trains.**

Car Stock 1 SSD, 4 SS, 1 BBL.  
Locomotive 1 H Class.

Bookings may be made at Launceston Railway Station or Launceston Tourist Bureau.

**No's. 353 and 356 trains.**

Car Stock 1 SP, 4 AAR, 2 BBL.  
Locomotive 2 M Class.

Bookings may be made at Launceston Railway Station or Launceston Tourist Bureau.

**No's. 360 and 355 trains.**

Car Stock 1 SP, 1 SSS, 2 SS, 3 AAL.  
Locomotive 1 H Class.

Bookings may be made at Devonport, Latrobe and Railton Railway Stations.

**Note :** Bookings on the Saturday trains may also be made with Secretary, Co-Ordinating Committee.

theless a considerable program of overhaul was needed to get sufficient of them in a fair state for running, especially since many of the trains were double-headed and one was in fact triple-headed.

The timetable booklet was oriented towards the railfan fraternity, containing as it did information on locomotive and car stock, train numbers, crossing arrangements and empty train running. On sale for 20 cents, or provided free with a mail purchase of an all-lines ticket, many must have been snapped up, but they are rarely seen today. The copy reproduced here is the Editor's own tattered and annotated copy. Although extensive, the timetable did not contain details of regular trains, although some appear in the crossing information. Omitted also were some empty stock movements. For instance, on the Tuesday evening prior to Centenary Day, a long rake of empty suburban cars, which had seen intensive use that day in Hobart because it was Hobart Regatta Day, were attached to one of the overnight goods trains to Launceston, and were

available for travel, a number of railfans making use of them.

Tasmania, and especially Launceston, truly entered into the spirit of the celebrations, with street decorations, feature articles in the newspapers and extensive media coverage. The local brewer, Boags, went so far as to brew a special "Centenary Ale" (it was **terrible**).

All trains were well patronised, even those listed in the timetable as empty car movements. Even the guards vans of regular goods trains were well filled with mainland railfans wishing to savour the delights of a little-travelled system. And not just railfans. AATTC founder Jack McLean was astounded to discover on No 235 goods train leaving Western Junction for the west at 11 at night, that there were no fewer than 17 passengers, including a genuine regular passenger bound for Oaks, a place at which passenger trains had ceased to call decades before.

With so many regular and special trains on the go on the Wednesday afternoon, it is not surprising that

there were some interesting safe-working arrangements instituted. Between Western Junction and Deloraine train working was normally by train staff and ticket, with rather closely-spaced staff stations at Longford, Hagley, Westbury and Exton, an average of about 9 miles per section. In order to facilitate the traffic, Bishopsbourne, in the 13¾ mile Longford-Hagley section was re-opened as a staff station, and a number of crosses occurred there. You will notice on our page 8 that the handing up of the Train Staff was part of the official program— which failed to mention that the driver had to give it back 100 yards down the track at the next staff station, North East Junction.

A number of trains ran late on this day, including the high-priority Tasman Limited, which had to take to the crossing loops to let the specials go past. Several trains got so out of kilter that they had to proceed under Staff Telegram working— Tasmania's equivalent of a Line Clear Report. All of this was extensively written up and appeared in a series of articles in Tasmanian Rail News.

---

# OFFICIAL PR

## LAUNCESTON RAILWAY STATION - W

- 11.35 a.m. Address of welcome by the Commissioner for Transport (Mr. G. T. Webb).
- 11.40 a.m. The Minister for Transport (the Hon. L. H. Bessell, M.H.A.) invites the Premier of Tasmania to unveil the commemorative plaque.
- 11.45 a.m. The Premier of Tasmania (the Hon. W. A. Bethune, M.H.A.) unveils commemorative plaque.
- 12 noon The Mayor of Launceston (Alderman R. M. Green) hands to the Guard of the Centenary train for safe keeping the Scrolls of Greetings to be presented to the Wardens of the Municipalities of Evandale, Longford, Westbury and Deloraine.
- 12.05 p.m. Centenary mail delivered to the station from the Launceston Post Office.
- 12.10 p.m. Station Master hands Train Staff to Driver.
- 12.15 p.m. Official guests entrain.
- 12.20 p.m. The Centenary train consisting of steam locomotives CCS.23 and MA.4 and cars BB+ 6, Sub. 1, ABL. 12, ABL. 14 and BBA. 4 departs for Deloraine.
- 12.47 p.m. Ceremony at Western Junction Station.

**MARSHALL :** Mr. C. G. Collins,



# PROGRAMME

## WEDNESDAY, 10<sup>TH</sup> FEBRUARY, 1971

- 1.17 p.m. Ceremony at Longford Station.
- 2.08 p.m. Ceremony at Westbury Station.
- 2.40 p.m. Centenary train arrives at Deloraine.
- 2.43 p.m. The Warden of Deloraine Municipality (Cr. J. G. D. McNeill) extends an official welcome on behalf of the Municipality.
- 2.50 p.m. Unveiling of commemorative plaque by the Premier.
- 3.00 p.m. The Chairman of the Railway Centenary Organising Committee (Mr. R. P. Wyly) to thank the Deloraine community for assistance in the Centenary celebration.
- 3.10 p.m. Special train (with official guests) departs for Launceston.
- 3.30 p.m. Centenary train departs for Launceston.
- 4.35 p.m. Special train arrives in Launceston.

General Manager of Railways.

# Buses south of Gordon

*He's back! If the feedback is any indication, JIM O'NEIL'S articles on the highways and byways (mostly the byways) of Sydney buses are the most popular we run. This month, we commence a new series, starting from Gordon on the North Shore line.*

The main bus service from Gordon, one of the intermediate terminals on the North Shore line, has always run down to the south west, into what is called West Pymble (in spite of being pretty much to the south of Pymble Station.) Since there is bushland both south and north of Gordon Station, there is little call for bus services in other directions. When I first started collecting bus timetables it was called the route 185 and was operated by W.R. Rice. The first timetable we will look at (see right and bottom left on page 11) is undated, but I got it in the early 1960s. The basic service forms a loop to the west of Ryde Road, leaving Ryde Road on Cross St (not mentioned) then via Livingstone Avenue and Kendall Street, back to Ryde Road, thence along Kamilaroy and Andrew Roads to Yanko Road. Just before the bus reaches Lofberg Road, on some trips, but only in the morning and up to 2.16, the bus runs south on Congham Road to Baronga Avenue. From Lofberg Road the bus runs further west on Yanko Road, north on Yarrara Road, east on Ward Street, back to Livingstone Ave. From 11 o'clock onwards, and all day Saturday it runs in the reverse order. Just a block before it reaches the Pacific Highway, the bus turns right into Ridge Street (note the timing point) thence Vale Street and St. John's Road to arrive at Gordon Station. In the peak hours buses skip the Ridge Street and Livingstone Avenue diversions when travelling in the contra-flow direction.

In the morning peak two buses are sufficient to operate the service, and only one during shopping hours. (Note the one bus running the loop the other way at 2.45, I've no idea why it did that, so far as I know there was no school in West Pymble around 1960 to explain it). Two buses are required again from 4.40, and a third starts at 5.38. The first two buses then run in to the depot, while the third contin-

ues on to provide the evening service. Did Rice provide more buses in the evening, or were some of the morning services duplicated? I never got up to Gordon in the morning to find out. On Saturdays one bus was enough, though some of the timings were tight, see the arrival and departure at Gordon at

7.42, for example. The 1.45 bus ran only to Ridge Street, then there was a gap for three hours, until 4.45, with service for two hours and then another gap until the 11.26 p.m. theatre bus. There was no equivalent theatre bus on weekdays, nor any service on Sundays and Holidays (though it doesn't say

## TIME-TABLE—Route 185

GORDON STATION — WEST PYMBLE BUS SERVICE

W. R. RICE, Prop. Phone JX 2427

### SATURDAY

	DEPART						ARRIVE
	GORDON	Ridge Street	Livingstone Avenue	YANCO & LOFBERG ROADS	Livingstone Avenue	Ridge Street	GORDON
AM	* —	—	—	7.27	7.32	7.37	7.42
AM	* 7.42	†	†	7.50	7.55	8.00	8.05
AM	* 8.17	†	†	8.27	8.32	8.37	8.42
AM	* 8.50	†	†	9.00	9.05	9.10	9.15
AM	* 9.30	9.35	9.40	9.45	9.50	9.55	10.00
AM	* 10.15	10.20	10.25	10.30	10.35	10.40	10.45
AM	* 11.00	11.05	11.10	11.15	11.20	11.25	11.30
AM	* 11.45	11.50	11.55	12.00	12.05	12.10	12.15
PM	* 12.15	12.20	12.25	12.30	12.35	12.40	12.45
PM	* 12.45	12.50	12.55	1.00	1.05	1.10	1.15
PM	* 1.15	1.20	1.25	1.30	1.35	1.40	1.45
PM	* 1.45	1.50	—	—	—	—	—
PM	* 4.45	4.50	4.55	5.00	5.05	5.10	5.15
PM	* 5.30	5.35	5.40	5.45	5.50	5.55	6.00
PM	* 6.15	6.20	6.25	6.30	6.35	6.40	6.45
PM	* 6.45	6.50	6.55	7.00	7.05	7.10	7.15
		TERMINATION GORDON THEATRE					
PM	* 11.26	11.31	11.36	11.41	—	—	—

[P.T.O.]

**Route 185. Gordon - West Pymble W.R. Rice prop.: undated, but early 1960's. Also timetable on p 11.**

so anywhere.)

At the same time, and also undated, W.R. Rice issued a Supplementary Timetable (right), on services provided, in shopping hours only, into the area of fairly new housing to the east of Ryde Road, which was later to be called West Gordon. Another bus is required to work this service. For example the main bus arrives at Gordon at 11.32, while the Supplementary one has left at 11.15. For much of the day Rice had two buses running.

The next timetable, on page 12, was issued on the 1st March 1966 by the Turramurra-Bobbin Head Bus Co. Rice had sold out to Deane's by this time and Turramurra-Bobbin Head Bus Co. was one of the names they used. The West Gordon bus now operated in peak hours, though only one in the

## SUPPLEMENTARY TIME-TABLE Route 185

Via Gordon Station, Pacific Highway, Ryde Road, Lofberg Road, Kooloona Crescent, Wyuna, Bandalong, Dunoon and Kippara Streets.

### MONDAY TO FRIDAY

	DEPART						ARRIVE	
	Gordon Station	Ryde Road and Vale St.	Kooloona Crescent	Kooloona Crescent	Bandalong Avenue	Kiparra and Ryde Road	Ryde Road and Vale St.	Gordon Station
AM	—	—	9.10	9.15	9.20	9.24	9.28	9.32
AM	9.45	9.49	9.56	10.00	10.05	10.09	10.13	10.17
AM	10.30	10.34	10.41	10.45	10.50	10.54	10.58	11.02
AM	11.15	11.19	11.26	11.30	11.35	11.39	11.43	11.47
PM	1.45	1.49	1.56	2.00	2.05	2.09	2.13	2.17
PM	2.45	2.49	2.56	3.00	3.05	3.09	3.13	3.17

**Route 185. Supplementary Timetable W.R. Rice prop.: undated, but early 1960's.**

### MONDAY TO FRIDAY

	DEPART				ARRIVE			
	<b>GORDON</b>				<b>YANCO &amp; LOFBERG ROADS</b>			
	Ridge Street	Livingstone Avenue	Baronga Avenue	Livingstone Avenue	Ridge Street	<b>GORDON</b>		
AM	—	—	—	6.12	6.17	6.22	6.27	
AM	† 6.40	†	—	6.49	6.54	6.59	7.04	
AM	—	—	—	7.10	7.15	7.20	7.25	
AM	† 7.08	†	7.22	7.24	7.29	7.34	7.39	
AM	† 7.25	—	—	7.35	7.40	7.45	7.50	
AM	† 7.40	†	7.48	7.50	7.55	8.00	8.05	
AM	† 7.50	—	—	8.00	8.05	8.10	8.15	
AM	† 8.07	†	—	8.17	8.22	8.27	8.32	
AM	† 8.40	†	9.00	9.02	9.07	9.12	9.17	
AM	† 9.29	9.34	9.39	9.47	9.52	9.57	10.02	
AM	† 10.14	10.19	10.24	10.32	10.37	10.42	10.47	
AM	* 11.00	11.05	11.10	11.15	11.22	11.27	11.32	
AM	* 11.45	11.50	11.55	12.00	12.05	12.10	12.15	
PM	* 12.30	12.35	12.40	12.45	12.50	12.55	1.00	
PM	* 1.14	1.19	1.24	1.29	1.36	1.41	1.46	
PM	* 2.00	2.05	2.10	2.15	2.22	2.27	2.32	
PM	† 2.45	2.50	2.55	3.00	3.05	3.10	3.15	
PM	* 3.15	3.20	3.25	3.30	3.35	3.40	3.45	
PM	* 3.45	3.50	3.55	4.00	4.05	4.10	4.15	
PM	* 4.15	4.20	4.25	4.30	4.35	4.40	4.45	
PM	* 4.40	4.45	4.50	4.55	5.00	5.05	5.10	
PM	* 5.00	5.05	5.10	5.15	†	†	5.25	
PM	* 5.15	5.20	5.25	5.30	†	†	5.40	
PM	* 5.30	5.35	5.40	5.45	†	†	5.55	
PM	* 5.38	5.43	5.48	5.53	†	†	6.05	
PM	* 5.46	5.51	5.56	6.01	†	†	6.16	
PM	* 5.56	6.01	6.06	6.11	†	†	6.16	
PM	* 6.10	6.15	6.20	6.25	†	†	6.35	
PM	* 6.24	6.20	6.34	6.39	†	†	6.35	
PM	* 6.45	6.50	6.55	7.00	†	7.05	7.10	
PM	* 7.12	7.16	7.20	7.24	†	†	7.32	
PM	* 8.12	8.16	8.20	8.24	†	†	8.32	
PM	* 9.12	9.16	9.20	9.24	†	†	9.32	

† Denotes bus operates outward journey Livingstone Avenue, Kendall, Ryde, Kamiloroy, Andrew Roads to Yanco Road, then Yarrara, Ward, etc.  
 \* Denotes bus operates outward journey Livingstone Avenue, Ward, Yarrara to Yanco Road, then Kamiloroy, Andrew, Ryde Roads, etc.  
 † Denotes bus operates Pacific Highway and Ryde Roads.

morning at 7.23, as against five in the evening which run on a different route which is a diversion from the West Pymble one, though none of these buses are to be found in the West Pymble timetable. The first West Gordon timing point has changed from Vale and Ridge to Ryde and Ridge, which suggests the diversion via St. John's Road had already been dropped for this service, as it certainly had by 1984.

On the other side of the timetable (right half of illustration) we find the West Pymble service. The two different versions of the loop are now identified A and B, and have a similar pattern to the timetable issued by Rice, including the odd-man out 2.45 running the other way to all other afternoon services. At first glance there still seem to be only two morning buses from West Pymble. But look at the 7.36 from Gordon Station:- it is marked A and B. It also passes two different timing points at the same time, 7.47 a.m.. I think we have two different buses, leaving West Pymble at the same time and each running up a different half of the loop. Since the West Gordon morning bus arrived at the station at 7.38 (while the duplicated bus left there two minutes earlier) it probably ran non-stop to form the second bus leaving at 7.45 from Wallalong and Coningham (Wallalong Cres. has replaced Baronga Av., but it's only a hundred yards or so distant). There are two buses required for the evening services in the West Pymble timetable, and a third for the combined West Gordon runs,

**BUS  
TIMETABLES**

**ROUTE 185**  
Gordon Station — West Gordon  
and Kooloona Crescent  
**AND**  
Gordon Station — West Pymble

**Special School Bus Services—**  
Kuringgai High School  
Mt. St. Bernard Convent  
Sacred Heart School, Pymble  
Kendall St. Catholic Church School  
West Gordon Public School  
West Pymble Public School

**Buses and Tourist Coaches  
Available for Charter**

**Turrumurra-Bobbin Head Bus Co.**  
Pty. Ltd.  
45-47 Tennyson Avenue, Turrumurra  
4B-2813 :: 4B-6324  
Price 2c 1st March, 1966

**ROUTE 185**  
**GORDON STATION — WEST GORDON AND KOOLOONA CRESCENT**  
Monday to Friday

Gordon Station, Pacific Highway, Ryde Road, Shaddock Street, Lofberg Road, Yanco Road, Kooloona Crescent (loop), Bingara Avenue, Kooloona Crescent, Yanco Road, Kamilaroy Road, Ryde Road, Wyona Road, Bolwarra Avenue, Bandalong Avenue, Dunoon Avenue, Kiparra Street, Ryde Road, Pacific Highway to Gordon.

DEPART A.M.	A.M.	A.M.	A.M.	A.M.	A.M.	A.M.	ARRIVE A.M.
Gordon	Ryde & Ridge	Lofberg & Yanco	Kooloona & Hampshire	Wyona & Bolwarra	Ryde & Kiparra	Ryde & Ridge	Gordon
—	—	—	—	7.23	7.28	7.33	7.38
		9.10	9.15	9.20	9.24	9.28	9.32
9.45	9.49	9.53	9.58	10.03	10.08	10.13	10.17
10.30	10.34	10.38	10.43	10.48	10.53	10.58	11.02
11.15	11.19	11.23	11.28	11.33	11.38	11.43	11.47
P.M.	P.M.	P.M.	P.M.	P.M.	P.M.	P.M.	P.M.
1.45	1.49	1.53	1.58	2.03	2.08	2.13	2.17
2.45	2.49	2.53	2.58	3.03	3.08	3.13	3.17
3.20	3.24	3.28	3.33	3.38	3.43	3.48	3.52

**BUSES ALSO OPERATE OVER THE FOLLOWING ROUTE AS UNDER**  
Monday to Friday

Gordon Station, Pacific Highway, Ryde Road, Cross Street, Livingstone Avenue, Kendall Street, Ryde Road, Kiparra Street, Dunoon Avenue, Ryde Road, Andrew Avenue, Yanco Road, Kooloona Crescent, Bingara Avenue, Kooloona Crescent, Yanco Road, Yarrara Road, Ward Street, Livingstone Avenue, Cultowa Street, Ryde Road and Pacific Highway to Gordon.

DEPART P.M.	P.M.	P.M.	P.M.	P.M.	P.M.	P.M.	ARRIVE P.M.
Gordon	Ryde & Ridge	Ward & Livingstone	Kiparra & Dunoon	Kooloona & Bingara	Yanco & Yarrara	Ward & Livingstone	Gordon
4.05	4.09	4.13	4.17	4.21	4.25	4.29	4.33
4.50	4.54	4.58	5.02	5.06	5.10	5.14	5.18
5.20	5.24	5.28	5.32	5.36	5.40	5.44	5.48
5.50	5.54	5.58	6.02	6.06	6.10	6.14	6.18
6.24	6.28	6.32	6.36	6.40	6.44	6.48	—

**SEE ALSO WEST PYMBLE TIMETABLE**  
No Service Sundays or Public Holidays

**ROUTE 185**  
**GORDON STATION — WEST PYMBLE**  
Monday to Friday

A—Gordon Station, St. John's Avenue, Vale Street, Ridge Street, Ryde Road, Cross Street, Livingstone Avenue, Ward Street, Yarrara Road, Yanco Road, Wallalong Avenue, Congham Road, Yanco Road, Kamilaroy Road, Ryde Road, Kendall Street, Livingstone Avenue, Cultowa Road, Ryde Road, Ridge Street, Vale Street, St. John's Avenue to Gordon Station.

B—Gordon Station, St. John's Avenue, Vale Street, Ridge Street, Ryde Road, Kamilaroy Road, Yanco Road, Congham Road, Wallalong Avenue, Yanco Road, Yarrara Road, Ward Street, Livingstone Avenue, Cultowa Road, Ryde Road, Ridge Street, Vale Street, St. John's Avenue to Gordon Station

S—School Days Only.

--A hyphen beneath a Check Point indicates Bus does not pass that point.

DEPART A.M.	A.M.	A.M.	A.M.	A.M.	A.M.	A.M.	A.M.	ARRIVE A.M.
Gordon	Ridge & Vale	Livingstone & Ward	Yanco & Yarrara	Wallalong & Congham	Kamilaroy & Yanco	Livingstone & Ward	Ridge & Vale	Gordon
B	—	—	6.07	6.05	6.03	6.11	6.15	6.19
B 6.40	—	—	6.51	6.49	6.47	6.56	7.00	7.04
B —	—	—	7.07	—	7.05	7.12	7.17	7.22
B 7.08	—	—	7.21	7.19	7.17	7.25	7.30	7.35
B 7.25	—	—	7.35	—	7.33	7.40	7.45	7.50
AB 7.36	—	—	7.47	7.45	7.43	7.51	7.55	8.00
B 7.50	—	—	8.00	—	7.58	8.05	8.10	8.15
A 8.07	—	8.12	8.15	8.17	8.20	8.25	8.30	8.35
B 8.45	—	8.51	9.00	8.58	8.56	9.05	9.10	9.15
B 9.29	9.34	9.39	9.48	9.46	9.43	9.52	9.57	10.02
B 10.14	10.19	10.24	10.33	10.31	10.28	10.37	10.42	10.47
A 10.59	11.04	11.09	11.13	11.15	11.18	11.22	11.27	11.32
A 11.44	11.49	11.54	11.58	12.00	12.03	12.07	12.12	12.17
P.M.	P.M.	P.M.	P.M.	P.M.	P.M.	P.M.	P.M.	P.M.
A 12.29	12.34	12.39	12.43	12.45	12.48	12.52	12.57	1.02
A 1.14	1.19	1.24	1.28	1.30	1.33	1.37	1.42	1.47
A 1.57	2.04	2.09	2.13	2.15	2.18	2.22	2.27	2.32
B 2.45	2.50	2.54	3.03	3.01	2.58	3.07	3.11	3.15
A 3.15	3.20	3.25	3.29	3.31	3.34	—	3.40	3.45
A 3.45	3.50	3.55	3.59	4.01	4.04	—	4.10	4.15
A 3.57.5	4.02.5	4.07.5	4.11.5	4.13.5	4.17.5	—	4.23.5	4.28.5
A 4.15	4.20	4.25	4.29	4.31	4.34	—	4.40	4.45
A 4.30.5	4.35.5	4.40.5	4.44.5	4.46.5	4.49.5	—	—	4.56.5
A 5.00	5.05	5.10	5.14	5.16	5.19	—	—	5.23
A 5.30	5.35	5.40	5.44	5.46	5.49	—	—	5.53
A 5.45	5.50	5.54	5.58	6.00	6.03	—	—	6.07
A 5.56	6.01	6.06	6.10	6.12	6.15	TO DEPOT	—	—
A 6.15	6.20	6.24	6.28	6.30	6.33	—	—	6.37
A 6.45	6.50	6.54	6.58	7.00	7.03	—	7.07	7.12
A 7.12	7.16	7.20	7.24	7.26	7.29	—	—	7.33
A 8.12	8.16	8.20	8.24	8.26	8.29	—	—	8.33
A 9.12	9.16	9.20	9.24	9.26	9.29	—	—	9.33

See also West Gordon Timetable

**Saturday**

(ALL JOURNEYS VIA ROUTE A)

DEPART A.M.	A.M.	A.M.	A.M.	A.M.	A.M.	A.M.	A.M.	ARRIVE A.M.
Gordon	Ridge & Vale	Livingstone & Ward	Yanco & Yarrara	Wallalong & Congham	Kamilaroy & Yanco	Livingstone & Ward	Ridge & Vale	Gordon
—	—	—	7.24	7.26	7.28	7.32	7.36	7.40
7.40	—	7.46	7.49	7.51	7.53	7.57	8.01	8.05
8.12	—	8.18	8.22	8.24	8.27	8.31	8.36	8.41
8.45	—	8.53	8.57	8.59	9.02	9.06	9.11	9.16
9.29	9.34	9.39	9.43	9.45	9.48	9.52	9.57	10.02
10.14	10.19	10.24	10.28	10.30	10.33	10.37	10.42	10.47
10.59	11.04	11.09	11.13	11.15	11.18	11.22	11.27	11.32
11.44	11.49	11.54	11.58	12.00	12.03	—	12.09	12.14
P.M.	P.M.	P.M.	P.M.	P.M.	P.M.	P.M.	P.M.	P.M.
12.15	12.20	12.25	12.29	12.31	12.34	—	12.40	12.45
12.45	12.50	12.55	12.59	1.01	1.04	—	1.10	1.15
1.15	1.20	1.25	1.29	1.31	1.34	—	1.40	1.45
4.45	4.50	4.54	4.58	5.00	5.03	—	5.10	5.15
5.30	5.35	5.39	5.43	5.45	5.48	—	5.55	6.00
6.01	6.06	6.10	6.14	6.16	6.19	—	6.26	6.31
6.31	6.36	6.40	6.44	6.45	6.49	—	6.56	7.00

No Service Sundays or Public Holidays

**Route 185. Gordon West Gordon & West Pymble Turrumurra-Bobbin Head Bus Co.: 1st March 1966. This company was a nom de plume of Deane's. This timetable was double-sided, both sides are shown.**

making three buses needed in both morning and evening. The Saturday service was much the same, except that the 1.15 now ran a complete loop back to Gordon and the theatre bus had vanished. TV was well established by 1966.

On 24th July 1984 Deane's issued

a timetable in their own name, with the cooperation of the Urban Transit Authority (see pages 13, 14, 15 and 16 top). The routes have now been renumbered, with the West Gordon becoming the 567, the West Pymble the 568

(which also applies to journeys to

Macquarie University) and a new route, 569 between Pymble Station and Macquarie University. The map is somewhat clearer in its original two colours (green and orange) with black and white. If you look closely you can see that the 567 is in a lighter shade of

• A multicolour map showing all bus routes forms the centre spread.

567	GORDON — WEST GORDON .....	3
568	GORDON — WEST PYMBLE .....	4-7
568	GORDON — MACQUARIE UNIVERSITY	
	To Macquarie University .....	10
	From Macquarie University .....	11
569	PYMBLE — MACQUARIE UNIVERSITY	
	To Macquarie University .....	10
	From Macquarie University .....	11

Map of bus routes	8-9
Bus stands at Gordon Station	12
Bus route links	13
Arrangements during train stoppages	14
General information	16

The Urban Transit Authority provides a comprehensive Transport Information Display at Turramurra and Gordon railway station. This display shows departure times for all buses and trains, and includes a coloured map of all bus routes in the area. Additional displays at various bus stops show departure times and route maps for the bus services at that particular stop.

Bus trips to and from Gordon and Pymble Stations show times of connecting trains to and from Central, according to the train timetable dated 28th July 1985. Only the time of the next connecting train is shown. For full details of all train services, consult the City - Chatswood - Hornsby train timetable brochure, available from railway stations.

This timetable is authorised by the Department of Motor Transport.

2

### Route 567:

		GORDON			WEST GORDON				GORDON		
Train departs Central	Train arrives Gordon from City	Gordon Station	Ryde Road & Ridge Street	Ryde Road & Kiparra Street	Wyuna Road & Bolwarra Avenue	Kooloona Crescent & Hampshire Avenue	Ryde Road & Kiparra Street	Ryde Road & Ridge Street	Gordon Station	Train departs Gordon for City	Train arrives Central
6 44	7 16	C 7 25	7 29	7 33	7 02	..	7 07	7 11	7 16	7 23	7 54
8 28	9 01	C 9 05	9 09	9 11	8 55	..	8 59	9 03	9 07	9 18	9 49
9 00	9 33	C 9 39	9 43	9 45	9 13	..	9 16	9 18	9 22	9 24	9 53
9 24	9 57	D 10 00	10 04	10 06	10 10	..	9 50	9 52	9 56	10 04	10 35
10 24	10 56	C 11 00	11 04	11 06	10 47	..	10 50	10 52	10 56	11 04	11 35
..	..	C ..	..	..	11 10	..	..	..	..	..	..
..	..	C ..	..	..	11 47	..	11 50	11 52	11 56	12 04	12 35
11 24	11 56	D 12 00	12 04	12 06	12 10	..	..	..	..	..	..
12 24	12 56	D 1 00	1 04	1 06	1 10	..	12 50	12 52	12 56	1 04	1 35
..	..	C ..	..	..	1 47	..	1 50	1 52	1 56	2 04	2 35
1 24	1 56	C 2 00	2 04	2 06	2 09	..	2 12	2 14	2 18	2 23	2 50
2 09	2 37	C 2 45	2 49	2 51	2 54	..	2 57	2 59	3 03	3 06	3 38
2 44	3 16	C 3 20E	3 24	3 26E	3 41	3 36E	3 45	3 47	3 51	3 57	4 27
3 39	4 12	D 4 15	4 19	4 23	4 27	4 30	4 33	4 35	4 40	4 46	5 20
4 13	4 47	D 4 55	4 59	5 03	5 07	5 10	5 13	5 15	5 20	5 26	5 58
4 54	5 24	D 5 30	5 34	5 38	5 42	5 45	5 48	5 50	5 55	6 03	6 35
5 19	5 53	D 5 58	6 02	6 06	6 10	6 13	6 16	6 18	6 23	6 27	6 58
5 56	6 28	D 6 30	6 34	6 36	6 39	..	..	..	..	..	..
8 39	9 08	9 13G	9 17G	..	G9 30	..	9 32G	9 37G	9 41	9 57	10 27
9 39	10 08	10 20G	10 24G	..	G10 37	..	10 39G	10 44G	10 48	10 57	11 27
11 09	11 38	11 51G	11 55G	..	G12 08	..	12 11G	12 14G	12 18	12 27	12 57
12 24	12 53	1 00G	1 04G	..	G1 16	..	1 19G	1 22G	1 26	1 42	2 12

- C — Loop service. Bus runs to West Gordon via Pacific Highway, Ryde Road, Wyuna Road, returning via Bolwarra Avenue, Bandalong Avenue, Dunoon Avenue and Kiparra Street.
- D — Loop service. Bus runs to West Gordon via Pacific Highway, Ryde Road, Kiparra Street, Dunoon Avenue, Bandalong Avenue, Bolwarra Avenue, returning via Wyuna Road, Ryde Road, Yanco Road, Kooloona Crescent, Yanco Road, Kamilaroy Road, Ryde Road and Pacific Highway.
- E — Bus runs via Pacific Highway, Ryde Road, Lofberg Road, Yanco Road, Kooloona Crescent, Bingarra Street, Kooloona Crescent, Yanco Road, Kamilaroy Road, Ryde Road, Wyuna Road, returning via Bolwarra Avenue, Dunoon Avenue and Kiparra Street.
- G — Combined service route 567, 568. Bus follows normal route 568 to Kamilaroy Road and Yanco Road, then runs along Kamilaroy Road, Ryde Road, Wyuna Road and Route 567 to Ryde Road and Kiparra Street, then follows normal route 568 to Gordon Station.

3

## Selections from West Pymble District timetable, routes 567, 568 and 569. Deane's Coaches: 24th July 1984, but under the cooperation of the Urban Transit Authority. Change of name, change of number, change of route and change of map!

grey, (that's the orange) and runs along the Pacific Highway, instead of St. John's Road, and operates into the area east of Ryde Road. The West Pymble service, the 568 is in a darker shade of grey, and has been extended into two areas south of Yanko Road, as well as to Parker Avenue along Comenarra Parkway and to the University. The 569 is shown from Pymble by a dotted line, and mislabelled 568 near Pymble. The correct number is shown, alongside 568, on the road to Macquarie University.

The 567 now has two morning peak services, and operates by two different loops on Mondays to Fridays. Saturday service is provided by diverting the 568 (marked G on page 3.) The 568 has considerably increased its peak hour service, as shown on pages 4 and 5 of the timetable. The loop is still being operated in two different directions, with B in the morning and A from 10.15. Some of the Macquarie University services (marked M on pages 4 and 5), operate round the loop the opposite way to the other buses at those times going only to

West Pymble. The Macquarie services had their own timetable on pages 10 and 11. The 568 from Gordon provides the most services, and all of them on Saturdays. The 569 from Pymble has one service each way in the morning and two in the afternoon, but only on School Days. There is another bus from Pymble at 9.33 a.m., but this is a 572, which comes from Turramurra. Most of the 572s operated via Kissing Point Road and the Comenarra Parkway (marked K) and are shown in this timetable only from Parker Street where they

entered territory covered by the 568.

On 12 August 1991, Shorelink, who had in turn taken over from Deane's, issued a new timetable (see *The Times* October 2000). The number 568 had disappeared, being replaced by 560 for services between Gordon and West Pymble

and 570 for Chatswood to Hornsby services diverted via West Pymble. The second one was not to last. The 567 kept its old number, but was back to shopping hours only. My last 567 timetable (see page 16 bottom) dates from 1997 and has two shopping services a day, extending from Gordon via West

Gordon to Macquarie Uni and back, and one afternoon school run. Note that the number 567 was not printed, but written in as an afterthought.

The final timetable (see pages 17 to 18) was issued on 22 May 2000 by Transdev, who had recently taken over Shorelink, whose name is still

**Route 568: GORDON STATION to WEST PYMBLE to GORDON STATION**

		GORDON			WEST PYMBLE							GORDON				
Train departs Central Station	Train arrives Gordon from City	Gordon Station	Ridge Street & Vale Street	Ward Street & Livingstone Avenue	Yanco Road & Yarrara Road	Parker Avenue	Wallalong Crescent & Congham Road	Kooloona Crescent & Hampshire Avenue	Kamilaroy Road & Yanco Road	Ryde Road & Kiparra Street	Ward Street & Livingstone Avenue	Ridge Street & Vale Street	Gordon Station	Train departs Gordon for City	Train arrives Central	
5:27	5:58	B 6:12			5:59		5:57		5:55		6:01	6:04	6:09	6:13	6:40	
6:05	6:36	B 6:47			6:26		6:23		6:20	6:17	6:28	6:31	6:35	6:39	7:06	
		B			7:02		6:59		6:55	6:53	7:05	7:09	7:13	7:17	7:48	
		B			7:20		7:16	S7 02L		S7 05L	S7 08	S7 11	S7 15	7:17	7:48	
		B			7:28		7:25	7:19L	7:16	7:22L	7:24	7:30	7:34	7:37	8:10	
		B 7:16							7:22	7:31	7:36	7:40	7:43	7:43	8:14	
						P7 31						7:44	7:49	7:53	8:26	
6:44	7:16	B 7:25S					S7 35L		S7 40L		S7 44	S7 49	7:53	8:26		
7:02	7:33	B 7:36					7:47L	7:44	7:48L	7:52	7:57	8:02	8:08	8:42		
7:02	7:33	B 7:37			7:50		7:47		7:44	7:54	8:00	8:04	8:08	8:42		
7:33	8:02	B 8:04			8:20		8:17		8:14	8:12	8:24	8:28	8:33	8:37	9:11	
7:39	8:11	A 8:15	8:19	8:22	8:25		8:28		8:31M							
7:54	8:30	B 8:35	8:39		8:52		8:49	8:46	8:44	8:42	8:55	8:58	9:03	9:07	9:38	
		B			M9 18	9:15	9:12		9:09		9:20	9:23	9:27	9:34	10:05	
8:51	9:24	A 9:29	9:33	9:35	9:37		9:40		9:42M							
8:51	9:24	B 9:30	9:34		9:46		9:43	9:40	9:38	9:36	9:48	9:51	9:55	10:04	10:35	
9:39	10:11	A 10:15	10:19	10:22	10:24		10:27	10:30	10:32	10:34	10:36	10:39	10:43	10:49	11:20	
10:24	10:56	A 11:00	11:04	11:07	11:09	11:12	11:14	11:17	11:19	11:21	11:23	11:26	11:30	11:34	12:05	
11:09	11:41	A 11:45	11:49	11:52	11:54		11:57	12:00	12:02M							

- A — Loop service. Bus runs to West Pymble via Yarrara Road, Wallalong Crescent, Kamilaroy Road, returning via Ryde Road.
- B — Loop service. Bus runs to West Pymble via Ryde Road, Kamilaroy Road, Wallalong Crescent, returning via Yarrara Road.
- L — Bus runs along Lofberg Road.
- M — Trip starts at or continues to Macquarie University.
- P — Bus leaves Parker Avenue then via Doncaster Road, Wyomee Avenue, Boongil Street, Warrowa Avenue, Greenway Drive, Courallie Avenue, Livingstone Avenue then normal route 568.
- R — Bus leaves Gordon Station via normal route 568 to Livingstone Avenue then Courallie Avenue, Greenway Drive, Warrowa Avenue, Boongil Street, Wyomee Avenue, Doncaster Avenue, Parker Avenue.
- S — Bus runs on School days only.
- Y — Bus runs from Ryde Road via Pacific Highway to Pymble Station.

4

		GORDON			WEST PYMBLE							GORDON				
Train departs Central	Train arrives Gordon from City	Gordon Station	Ridge Street & Vale Street	Ward Street & Livingstone Avenue	Yanco Road & Yarrara Road	Parker Avenue	Wallalong Crescent & Congham Road	Kooloona Crescent & Hampshire Avenue	Kamilaroy Road & Yanco Road	Ryde Road & Kiparra Street	Ward Street & Livingstone Avenue	Ridge Street & Vale Street	Gordon Station	Train departs Gordon for City	Train arrives Central	
11:54	12:26	B 12:30	12:34	M12 11	12:39	12:42	12:08	12:05	12:03	12:51	12:13	12:16	12:20	12:34	1:05	
12:39	1:11	A 1:15	1:19	1:22	1:24		1:27	1:30	1:32	1:34	1:36	1:39	1:43	1:49	2:20	
1:24	1:56	A 2:00	2:04	2:07	2:09		2:12	2:15	2:17	2:19	2:21	2:24	2:28	2:34	3:05	
1:54	2:26	A 2:35	2:39	2:42	2:44		2:47	2:50	2:52	2:54		2:57	3:01	3:06	3:38	
2:31	3:03	A 3:05	3:10	3:13	3:15		3:20	3:23	3:26M							
3:00	3:29	A 3:32	3:37	3:40	3:42	3:45	3:47		3:50	3:52		3:55	3:59	4:02	4:33	
		B			M3 57		3:54		3:52		3:59	4:02	4:07	4:10	4:42	
3:09	3:39	A 3:45	3:50	3:53	3:55		3:58		4:01	4:03		4:06	4:10	4:22	4:55	
3:32	3:59	S 4:05R			S4 22	S4 20			S4 23M							
3:32	3:59	A 4:05	4:10	4:13	4:16		4:19		4:22	4:24		4:27	4:31	4:34	5:05	
3:51	4:19	A 4:23	4:28	4:31	4:34		4:37		4:40	4:42		4:45	4:49	4:52	5:24	
4:09	4:38	A 4:40	4:45	4:48	4:50	4:53	4:56		4:59M							
4:19	4:52	A 4:55	5:00	5:04	5:07		5:10		5:13	5:15		5:18	5:22	5:26	5:58	
									M5 27			5:30	5:35	5:43	6:15	
4:44	5:12	A 5:15	5:20	5:24	5:27		5:30		5:33M							
4:54	5:24	A 5:30	5:35	5:39		5:42	5:45		5:48	5:50		5:53	5:57	6:03	6:35	
5:08	5:39	A 5:45	5:50	5:54	5:57		6:00		6:03	6:05		6:08	6:12	6:19	6:50	
5:34	6:03	A 6:05	6:10	6:14		6:17	6:20		6:23	6:25		6:28	6:32	6:35	7:02	
5:46	6:20	A 6:22	6:27	6:30	6:32		6:35		6:38M							
6:05	6:31	A 6:37	6:41	6:43	6:45		6:47		6:49	6:51		6:53	6:57	7:12	7:42	
6:26	6:54	A 7:00	7:04	7:06	7:08		7:10		7:12M							
									M7 17			7:20	7:24	7:27	7:57	
6:54	7:23	A 7:30	7:34	7:36	7:38		7:40		7:42	7:44		7:46	7:50	7:57	8:27	
7:24	7:53	A 7:55	7:59	8:01	8:03		8:05		8:07M							
7:54	8:23	A 8:25	8:29	8:31	8:33		8:35		8:37	8:38Y			Y8 43			
9:09	9:38	A 9:40	9:44	9:46	9:48		9:50		9:52	9:53Y			Y9 58			
10:24	10:53	A 10:55	10:59	11:01	11:03		11:05		11:07M							

5

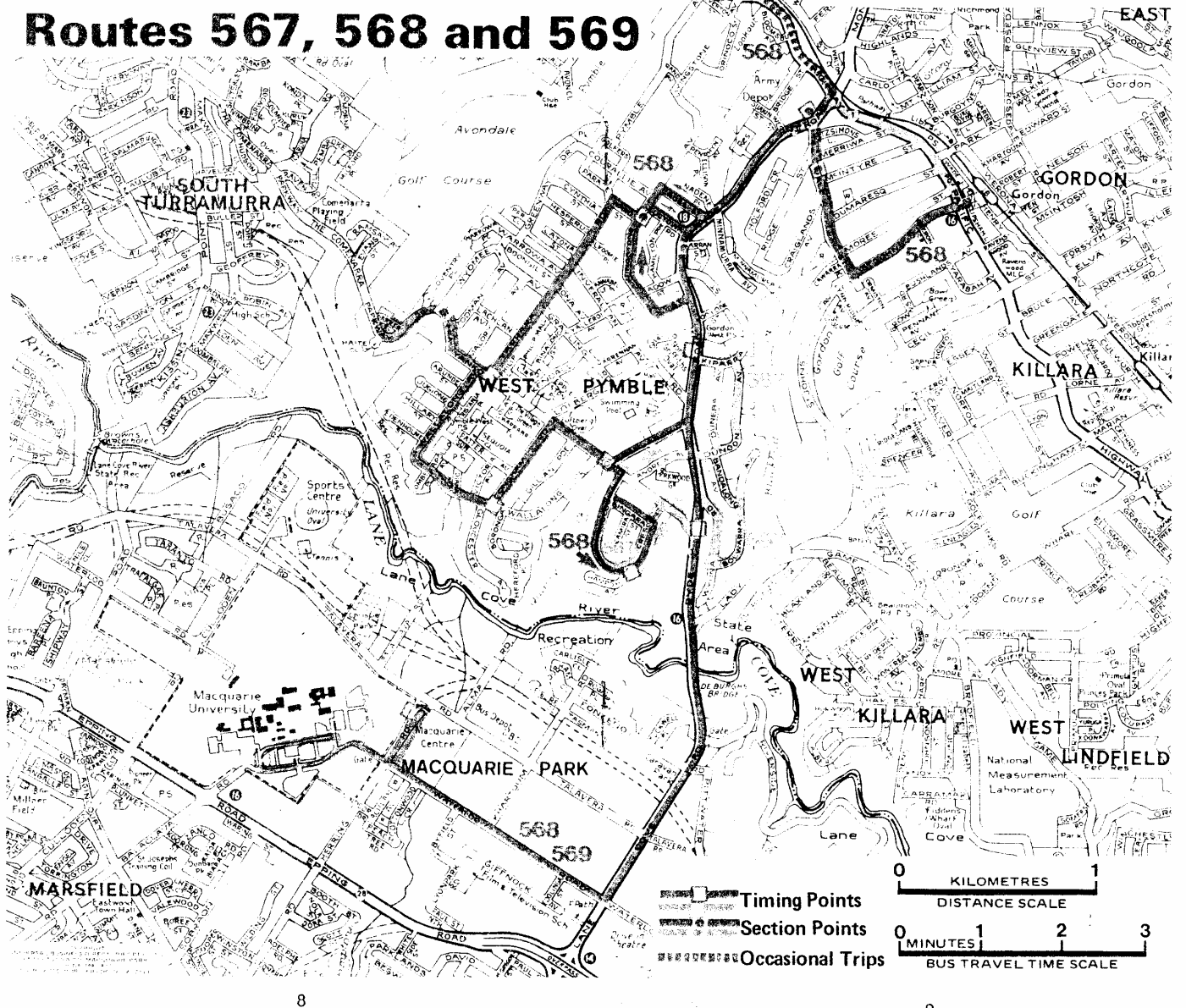
**More selections from West Pymble District timetable, routes 567, 568 and 569. Deane's Coaches: 24th July 1984.**

on the website as well as at the top of the timetable. The route number is 560 and the 567 has been absorbed in it. The 560 has some services diverting via Kippara Street and Bolwarra Avenue, marked G on the timetable, so West Gordon is still served. The Macquarie and the West Pymble

loop buses are now shown on different timetables, so you need to look at both if you want to go somewhere covered by the two. If you want a bus from Gordon to West Gordon School, say after 8 a.m., you must look in both timetables, for the 8.10 to Macquarie and the 8.16 to West Pymble. The

Macquarie buses run direct via the Highway and Ryde Road and no buses divert via St. John's Road any more. All West Pymble buses now go round the loop in the same way. Sunday service is now found, but only on the loop - if you want to go Sunday shopping, you go by car.

## WEST PYMBLE DISTRICT BUS ROUTES Routes 567, 568 and 569



Route map for routes 567, 568 and 569, taken from Deane's Coaches timetable of 24th July 1984. AS the timetable itself boasted, the map was in colour.

**Route 568:** GORDON STATION to MACQUARIE UNIVERSITY via West Pymble.

**Route 569:** Pymble Station to MACQUARIE UNIVERSITY via Ryde Road.

\* Also shows route 572 trips between Turramurra and Macquarie University.

Route No.	Pymble Station	Train departs Central	Train arrives Gordon from City	GORDON					WEST PYMBLE				MACQUARIE PARK	
				Gordon Station	Ryde Road & Ridge Street	Ryde Road & Kiparra Street	Parker Avenue	Wallalong Crescent & Congham Road	Yanco Road & Ryde Road	Macquarie Centre	Macquarie University			
WEEKDAYS														
MORNINGS														
568		7 39	8 11	A 8 15	8 19			8 28	8 33	8 43	8 48			
569	8 33				8 38	8 40			8 41	8 51	8 55			
568		8 51	9 24	A 9 29	9 33			9 40	9 44	9 51	9 54			
572	9 33				9 37	9 39			9 40	9 47	9 50			
572							K10 30		10 33	10 40	10 43			
572							K11 30		11 33	11 40	11 43			
568		11 09	11 41	A 11 45	11 49			11 57	12 04	12 11	12 14			
AFTERNOONS														
568		2 24	2 54	A 3 05	3 10			3 20	3 28		3 38			
569	S3 50				S3 54	S3 56			S3 57		S4 05			
568		3 32	3 59	A 4 05	4 10			4 20	4 24	S4 32				
569	S4 45				S4 50	S4 52			S4 54		S5 04			
568		3 55	4 28	A 4 40	4 45		4 53	4 56	5 01		5 11			
568		4 44	5 12	A 5 15	5 20			5 30	5 35	5 43				
568		5 38	6 12	A 6 22	6 27			6 35	6 40	6 47	6 50			
568		6 26	6 54	A 7 00	7 04			7 10	7 14	7 21				
568		7 09	7 38	A 7 55	7 59			8 05	8 09	8 16				
568		10 09	10 38	A 10 55	10 59			11 05	11 09	11 16				
SATURDAYS														
MORNINGS														
568		8 54	7 23	A 7 28	7 32			7 38	7 42	7 49				
568		8 09	8 38	A 8 45	8 49			8 57	9 00	9 08				
568		9 09	9 38	A 9 45	9 49			9 57	10 03	10 11				
568		10 39	11 08	A 11 15	11 19			11 27	11 33	11 40				
AFTERNOONS														
568		11 39	12 08	A 12 22	12 26			12 33	12 39	12 46				
568		12 54	1 23	A 1 30	1 34			1 41	1 44	1 50				
568		4 54	5 23	A 5 35	5 39			5 45	5 48	5 54				
568		5 54	6 23	A 6 30	6 34			6 40	6 43	6 49				

**EXPLANATIONS**

- A — Bus runs to West Pymble via Yarrara Road, Wallalong Crescent, Kamilaroy Road.
- K — Bus leaves Turramurra Station and travels along Kissing Point Road and The Comenarra Parkway.
- S — Bus runs during School terms only.

DO YOU USE DEANE'S BUSES TO CONNECT WITH U.T.A. SERVICES AT MACQUARIE CENTRE? Then you can use **TRAVELPASS\*** for unlimited trips every day on government buses, ferries and trains.



**SHORELINK**  
**SPECIALISED**

**TRANSPORT SERVICES**

**567**  
**WEST GORDON**

**LINKING**

**GORDON**  
**WEST GORDON**  
**MACQUARIE**

**7TH DECEMBER 1998**  
**PHONE: (02) 9457-8888**

MONDAY  
WEDNESDAY  
FRIDAY

LOCATION	A.M.	P.M.	P.M.
GORDON STATION	9.40	12.40	3.15 S
RIDGE & VALE	9.44	12.44	3.19 S
GORDON WEST SCHOOL	9.46	12.46	3.21 S
WYUNA & BOLWARRA	9.48	12.49	3.24 S
MACQUARIE CENTRE	9.58	12.58	-
MACQUARIE UNI	10.02	1.02	-
MACQUARIE CENTRE	10.16	1.11	-
WYUNA & BOLWARRA	10.25	1.20	-
GORDON WEST SCHOOL	10.29	1.24	-
RIDGE & VALE	10.31	1.26	-
GORDON STATION	10.36	1.31	-

**EXPLANATIONS:**  
S - OPERATES DAILY DURING SCHOOL TERM

**ROUTE:**  
GORDON - MACQUARIE VIA ST. JOHNS AVE  
(R) VALE ST, RIDGE ST, (L) RYDE (L) KIPARRA (R)  
DUNOON AVE (L) BANDALONG AVE (R)  
BOLWARRA AVE (R) WYUNA RD (L) RYDE RD (R)  
WATERLOO RD (R) HERRING RD TO MACQUARIE CENTRE THEN TO MACQUARIE UNIVERSITY

MACQUARIE - GORDON  
(REVERSE DIRECTION TO ABOVE)

**Route 568:** MACQUARIE UNIVERSITY to GORDON STATION via West Pymble

**Route 569:** MACQUARIE UNIVERSITY to PYMBLE STATION via Ryde Road.

\* Also shows route 572 trips between Macquarie University and Turramurra.

Route No.	Macquarie University	Macquarie Centre	Yanco Road & Ryde Road	Wallalong Crescent & Congham Road	Parker Avenue	Ryde Road & Kiparra Street	Ryde Road & Ridge Street	GORDON			Pymble Station
								Gordon Station	Train departs Gordon for City	Train arrives Central	
WEEKDAYS											
MORNINGS											
568	B ..	T5 48	5 53	5 57			6 04	6 09	6 13	6 40	6 40
569		T6 32	6 35		6 36		6 38		7 07	7 11	
568		T6 54	7 00		7 07	7 11	7 16	7 23	7 23	7 54	
568		T6 54S	S7 00		S7 06	S7 11	S7 15	7 23	7 54		
568	B ..	T7 05	7 11	7 16		7 29	7 34	7 43	8 14		
568		T7 08	7 14		7 22	7 30	7 34	7 43	8 14		
568	B 8 57	9 00	9 07	9 12	9 15	9 23	9 27	9 34	10 05		
568	B 11 51	11 54	12 01	12 08		12 16	12 20	12 34	1 05		
AFTERNOONS											
572		1 10	1 13	1 20		1 23K					
572		2 30	2 33	2 40		2 43K					
568	B 3 40	3 43	3 50	3 54			4 02	4 07	4 22	4 55	
569	S4 07	S4 10	S4 17		S4 19	S4 21					S4 25
572	H4 47	H4 51	H4 58		H5 03K						
572	S5 06	S5 10	S5 17		S5 22K						S5 42
568		5 13	5 17	5 24		5 27	5 30	5 35	5 43	6 15	
568		7 07	7 10	7 15		7 17	7 20	7 24	7 42	8 12	
SATURDAYS											
MORNINGS											
568	B ..	T7 05	7 12	7 15			7 21	7 25	7 42	8 12	
568	B ..	T7 50	7 57	8 00			8 07	8 11	8 27	8 57	
568	B ..	8 43	8 50	8 55			9 03	9 07	9 12	9 42	
568	B ..	9 52	9 59	10 05			10 13	10 17	10 27	10 57	
568	B ..	11 04	11 11	11 17			11 25	11 29	11 42	12 12	
AFTERNOONS											
568	B ..	12 30	12 37	12 43			12 51	12 55	1 12	1 42	
568	B ..	4 42	4 49	4 50			4 56	5 00	5 12	5 42	

**EXPLANATIONS**

- B — Bus runs to West Pymble via Ryde Road, Kamilaroy Road, Yanco Road then to Gordon via Yarrara Road.
- H — Bus runs during School holidays only.
- K — Bus travels to Turramurra Station along The Comenarra Parkway and Kissing Point Road.
- S — Bus runs during School terms only.
- T — Bus departs Alma Road and Talavera Road and runs along Talavera Road to Ryde Road.

*(Above) Further selections from West Pymble District timetable, routes 567, 568 and 569. Deane's Coaches: 24th July 1984.*

*(Left) Route 567: West Gordon Shorelink: 7th December 1998. The route number appears to have been added as an afterthought - perhaps a proof-readers slip-up?*



**Shorelink**  
 A Member of the TRANSDEV Group  
 ABN 53 097 409 437  
 Timetable Enquiries Route  
 Services (7 days):  
 Phone: 131 500  
 Office:  
 33 Beaumont Road,  
 Mt Kuring-gai NSW, 2080  
 Phone: (02) 9457 8888,  
 Fax: (02) 9457 9086  
 Postal Address:  
 PO Box 138, Mt Kuring-gai  
 NSW 2080  
 Email:  
 info@shorelink.com.au  
 Office Hours:  
 8.00am - 5.00pm Mondays to Fridays

Gordon - Macquarie		Route 560	
		SATURDAY	Route 560
		MORNING	AFTERNOON
1	GORDON STATION	8:50	10:50 11:50 12:50 1:50 2:50 3:50
2	Gordon West Public School	R	R R R R R R
4	Wallalong & Coningham	8:59 10:59 11:59	12:59 1:59 2:59 3:59
5	Lane Cove Rd & Waterloo Rd	9:07 11:07 12:07	1:07 2:07 3:07 4:07
8	MACQUARIE CENTRE (arr)	9:10 11:10 12:10	1:10 2:10 3:10 4:10

Macquarie - Gordon		Route 560	
		SATURDAY	Route 560
		MORNING	AFTERNOON
8	MACQUARIE CENTRE (dep)	9:52 11:52 12:52	1:52 2:52 3:52 4:52
6	Lane Cove Rd & Waterloo Rd	9:55 11:55 12:55	1:55 2:55 3:55 4:55
4	Wallalong & Coningham	10:05 12:05	1:05 2:05 3:05 4:05 5:05
2	Gordon West Public School (opposite)	W	W W W W W
1	GORDON STATION	10:15 12:15	1:15 2:15 3:15 4:15 5:15

**SHORELINK**  
 BUS TIMETABLE

**Route 560**

West Gordon  
 & West Pymble

**Linking**

- Gordon
- West Gordon
- West Pymble
- Macquarie Centre
- Macquarie University

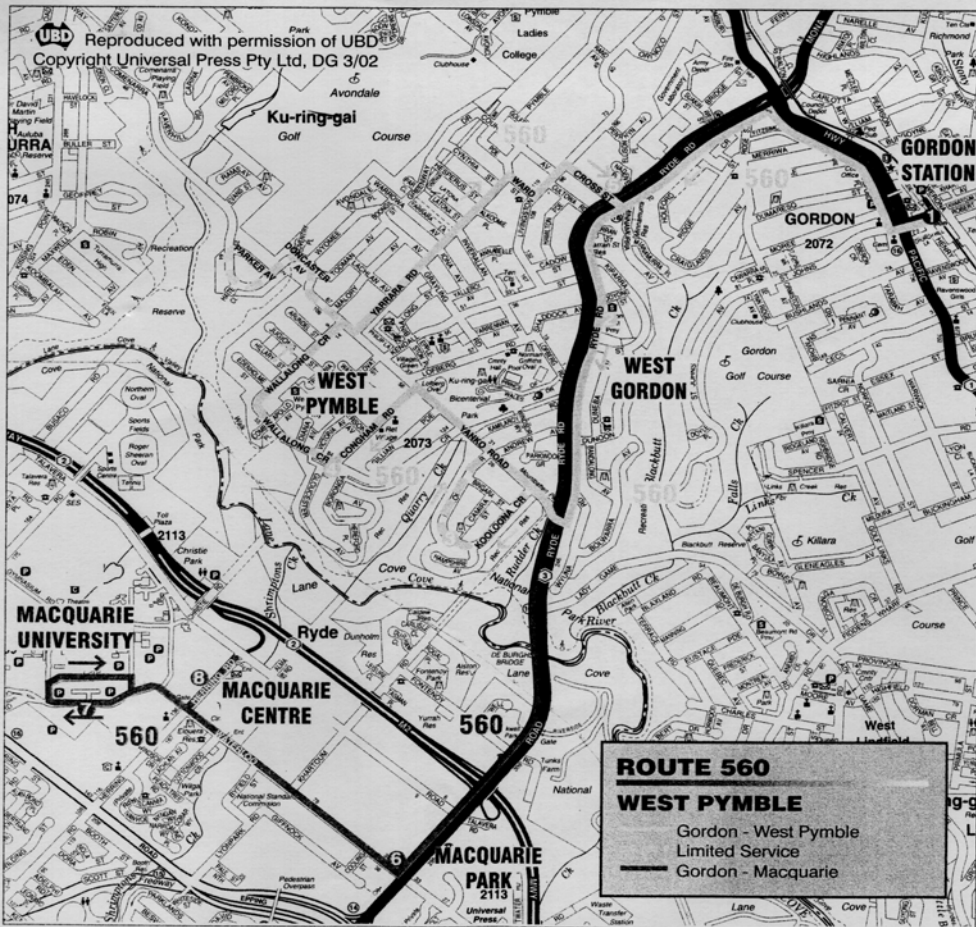
Effective Date  
 22 May 2000

Information Line  
**131 500**  
[www.shorelink.com.au](http://www.shorelink.com.au)



Route 560 West Gordon and West Pymble Shorelink (Transdev): 22 May 2000. This timetable was produced not long after Transdev took over Shorelink. Both names appear on the table and on the relevant web-site.

The route map (below) is based on UBD's Street Directory, as are so many route maps for Sydney's bus services.



Gordon - Macquarie													Route 560				
MONDAY TO FRIDAY																	
MORNING																	
AFTERNOON																	
1	GORDON STATION	6:43	7:10	8:10	9:10	10:10	11:10	12:10	1:08	2:51	3:51	4:25	4:54	5:25	5:48		
5	Cross St & Ryde Rd	-	-	-	-	10:15	-	12:15	-	-	-	4:30	-	5:30	-		
2	Gordon West Public Sch <sup>1</sup>	6:50	7:20	8:20	9:16	R	11:16	R	1:14	2:57	3:57	R	5:00	R	5:54		
4	Wallalong & Congham	-	-	-	G	10:19	G	12:19	G	-	-	4:36	-	5:36	-		
3	Kooloona Loop	-	-	-	-	10:23	-	12:23	-	-	-	-	-	-	-		
6	Lane Cove Rd & Waterloo Rd	6:58	7:28	8:28	9:28	10:30	11:26	12:30	1:24	3:03	4:03	4:46	5:06	5:46	6:00		
8	Macquarie Centre	7:02	7:32	8:32	9:32	10:34	11:30	12:34	1:28	-	-	-	-	-	-		
7	MACQUARIE UNI. (arr)	7:06	7:36	8:36	9:36	10:38	11:34	12:38	1:32	3:07	4:07	4:50	5:10	5:50	6:05		

Macquarie - Gordon													Route 560				
MONDAY TO FRIDAY																	
MORNING																	
AFTERNOON																	
7	MACQUARIE UNI. (dep)	7:12	7:42	8:42	9:42	10:42	11:37	12:42	1:37	3:07	4:14	4:55	5:15	5:55	6:10		
8	Macquarie Centre	7:16	7:46	8:46	9:46	10:46	11:41	12:46	1:41	3:10	4:18	4:59	5:19	5:59	6:15		
6	Lane Cove Rd & Waterloo Rd	7:19	7:49	K	9:49	10:49	11:44	12:49	1:44	3:13	4:21	5:02	5:22	6:02	6:18		
3	Kooloona Loop	D	D	8:55	9:55	D	11:50	12:55	D	D	D	-	D	-	D		
4	Wallalong & Congham	-	-	8:59	9:59	G	11:54	12:59	G	-	-	5:14	-	6:14	-		
2	Gordon West Public School (opposite)	7:25	7:55	W	W	10:59	W	W	1:54	3:17	4:28	W	5:32	W	6:25		
5	Cross St & Ryde Rd	-	-	9:04	10:04	-	11:58	1:03	-	-	-	5:18	-	6:18	-		
1	GORDON STATION	7:36	8:06	9:14	10:14	11:05	12:04	1:09	2:00	-	4:36	5:24	5:40	6:24	6:31		

Gordon - West Pymble via West Gordon													Route 560				
SUNDAY																	
MORNING																	
AFTERNOON																	
1	GORDON STATION	9:30	11:30	1:30	3:20	5:20											
2	Gordon West Public School	9:36	11:36	1:36	3:26	5:26											
4	Wallalong & Congham	9:41	11:41	1:41	3:31	5:31											
5	Cross St & Ryde Rd	9:45	11:45	1:45	3:35	5:35											
1	GORDON STATION	9:49	11:49	1:49	3:39	5:39											

**FOR SATURDAY MACQUARIE TIMETABLE SEE OVER**

Grey Highlights: Bus operates on School Days Only  
 D: Bus operates via Ryde Rd. DOES NOT operate via West Pymble  
 R: Bus operates via West Pymble (Reverse direction to normal Route 560 Service)  
 W: Bus operates via West Pymble (see main Route 560 timetable)  
 K: Bus diverts via (L) Kharatoom, (R) Fontenoy (L) Ryde Rds  
 G: Bus diverts via Kippara, Duncun, Bandalong, Bolwarra Wyuna (and vice versa) DOES NOT travel along Ryde Road between Kippara & Wyuna  
 P: Parker Avenue weekdays Only: Buses to Gordon Station depart Parker Ave (corner of Comererra Parkway) at 7.00am and 7.10am Buses to Parker Ave depart Gordon Station at 4.10pm and 6.10pm

Gordon - West Pymble via West Gordon													Route 560				
MONDAY TO FRIDAY																	
MORNING																	
1	GORDON STATION	6:04	6:33	-	6:53	-	7:08	7:31	7:43	8:16	-	9:18	-	10:18	11:18	-	
2	Gordon West Public School	6:10	6:39	-	6:59	-	7:18	7:41	7:53	8:26	-	9:24	-	10:24	11:24	-	
3	Kooloona Loop	-	-	P	-	P	7:27	-	-	-	8:55	9:28	9:55	10:28	11:28	11:50	
4	Wallalong Cr & Congham Rd	6:18	6:47	-	7:09	7:20	7:31	7:51	8:09	8:36	8:59	9:32	9:59	10:32	11:32	11:54	
5	Cross St & Ryde Road	6:22	6:51	7:10	7:14	7:25	7:36	7:57	8:14	8:41	9:04	9:36	10:04	10:36	11:36	11:58	
1	GORDON STATION	6:29	6:58	7:18	7:23	7:34	7:45	8:08	8:25	8:50	9:14	9:43	10:14	10:43	11:43	12:04	

Gordon - West Pymble via West Gordon													Route 560					
MONDAY TO FRIDAY																		
AFTERNOON																		
1	GORDON STATION	12:18	-	1:18	2:18	3:20	3:38	4:08	4:40	-	5:09	5:38	-	6:10	6:37	7:06	7:34	8:34
2	Gordon West Public School	12:24	-	1:24	2:24	3:26	3:44	4:14	4:46	-	5:15	5:44	-	6:16	6:43	7:12	7:40	8:40
3	Kooloona Loop	12:28	12:55	1:28	2:28	3:30	-	P	-	-	-	-	P	-	-	-	-	-
4	Wallalong Cr & Congham Rd	12:32	12:59	1:32	2:32	3:34	3:52	4:22	4:54	5:14	5:23	5:52	6:14	6:24	6:48	7:17	7:45	8:45
5	Cross St & Ryde Road	12:36	1:03	1:36	2:36	3:38	3:58	4:32	4:58	5:18	5:28	5:57	6:18	6:33	6:53	7:22	7:50	8:50
1	GORDON STATION	12:43	1:09	1:43	2:43	3:45	4:03	4:38	5:04	5:24	5:34	6:03	6:24	6:40	6:57	7:28	7:56	8:56

Gordon - West Pymble via West Gordon													Route 560							
SATURDAY																				
MORNING																				
AFTERNOON																				
1	GORDON STATION	8:25	8:55	9:25	-	10:25	10:55	11:25	-	12:25	1:25	-	2:20	-	3:20	-	4:20	-	5:20	
2	Gordon West Public School	8:31	9:01	9:31	-	10:31	11:01	11:31	-	12:31	1:31	-	2:26	-	3:26	-	4:26	-	5:26	
4	Wallalong & Congham	8:35	9:05	9:35	10:05	10:35	11:05	11:35	12:05	12:35	1:05	1:35	2:05	2:30	3:05	3:30	4:05	4:30	5:05	5:30
5	Cross St & Ryde Rd	8:39	9:09	9:39	10:09	10:39	11:09	11:39	12:09	12:39	1:09	1:39	2:09	2:34	3:09	3:34	4:09	4:34	5:09	5:34
1	GORDON STATION	8:45	9:15	9:45	10:15	10:45	11:15	11:45	12:15	12:45	1:15	1:45	2:15	2:40	3:15	3:40	4:15	4:40	5:15	5:40

## Tweed River Steamer Time Table

*We do not know the date of this timetable, but it must have been in the early 20th century if the references to a 'Motor Char-a-banc' are any guide. It appears to have come from a QR public timetable book.*

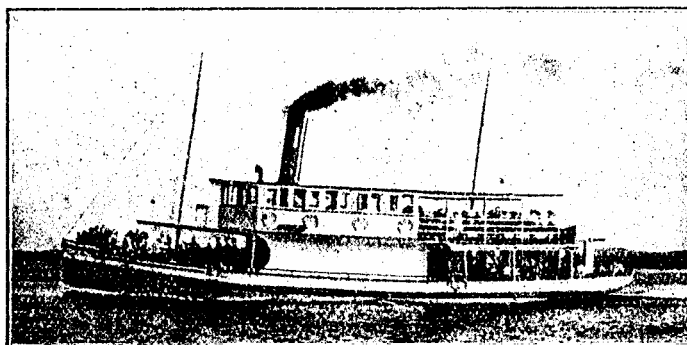
### **SKINNER, LOWES & CO.,**

**Tweed River Steamer Proprietors.**

---

Cordial and Aerated Water Manufacturers.  
Forwarding Agents between the Northern Rivers  
of New South Wales and Southern Queensland.  
All letters and telegrams promptly attended to.

---



#### ***Tweed River Passenger Service.***

*Steamers run daily (except Sunday) between Murwillumbah and Tweed Heads, connecting with the trains to and from Tweed Heads and Brisbane; on Tuesday, Thursday, and Saturday with train from Murwillumbah to Lismore and Casino. In addition, another Steamer runs daily (except Sunday), leaving Tweed Heads at 9 a.m. and Murwillumbah at 2.30 p.m. for the convenience of Holiday Makers to Tweed Heads. Fares for the 20-Mile Trip 3s. Return.*

#### ***Motor Char-a-Banc Service.***

*A Fine Up-to-date Char-a-Banc Motor runs daily between Murwillumbah and Tweed Heads, connecting with the Train from Tweed Heads to Brisbane.*

For further information apply to the Proprietors—

***Skinner, Lowes & Co., Murwillumbah, N.S.W.***

# Timetable Oddity #8.

This month's oddity is surpassing strange indeed. The Editor seems to recall that he picked it up out of the grab-box at a Sydney Branch AATTC meeting early in 2004.

It is an attractive little 3 x one-third A4 page sized fold out glossy colour card timetable. But look—

there's no identification as to who has produced it, who runs the service, no effect date, no contact information—none of the information one would expect to find in a Public Time Table.

But *is* it a public timetable anyway? Its strangest feature is surely

that it contains all the times for the intermediate crossing places, most of which (e.g. 'Leeor Loop') would be totally unfathomable to the usual passengers.

One of our proof-readers who shall remain nameless\* provided the answer to this little mystery just before The Times went to press.. The timetable is in fact produced by Great Southern Railways, even though it doesn't say so. It has a long lineage, apparently- timetables of this rather enigmatic nature apparently having been produced since the times of the first Transcontinental . Similar timetables exist for other GSR services. So now the mystery becomes... why be so mysterious about it?

\* Victor Isaacs.



Melbourne to Adelaide										
Location	Sunday	Monday	Thursday	Friday						
Melbourne	2130	2130	2130	2130	Lubeck Loop	Depart	0148	0133	0142	0146
Dynon	2137	2137	2137	2137	Murtoa	Depart	0157	0142	0151	0155
Tottenham	2143	2143	2143	2143	Murtoa Loop	Depart	0202	0148	0156	0200
Newport	2153	2153	2153	2153	Jung	Depart	0210	0154	0202	0207
Manor Loop	2211	2211	2211	2211	Horsham	Arrive	0216	0201	0209	0210
North Shore Geelong	2232	2232	2232	2232		Depart	0224	0202	0214	0212
	2238	2238	2238	2238	Pimpinio Loop	Depart	0238	0216	0228	0237
Gheringhap Loop	2251	2251	2251	2251	Dimboola	Arrive	0247	0225	0237	0246
Inverleigh	2304	2306	2304	2304		Depart	0252	0231	0242	0251
Winget Loop	2312	2315	2327	2312	Dimboola Loop	Depart	0257	0255	0246	0254
Berrybank Loop	2334	2337	2349	2334	Salisbury Loop	Depart	0311	0309	0259	0309
Vile Vile Loop	2356	0001	0012	2356	Diapur Loop	Depart	0326	0324	0314	0324
					Kaniva Loop	Depart	0337	0335	0326	0334
Taiyoon Loop	0021	0026	0036	0020	Leeor Loop	Depart	0351	0349	0339	0349
Maroona	0030	0034	0045	0029		Arrive	0357EST	0355EST	0346EST	0354EST
Ararat	0044	0048	0058	0042		Depart	0327CST	0325CST	0316CST	0324CST
	0046	0051	0100	0044	Bordertown	Arrive	0335	0333	0324	0332
Pyrenees Loop	0110	0054	0102	0052		Depart	0337	0335	0326	0335
Great Western Loop	0120	0104	0112	0102	Winega	Depart	0348	0347	0338	0347
Deep Lead Loop	0134	0119	0128	0117	Keith	Depart	0404	0402	0354	0403
					Coombe	Depart	0414	0412	0405	0414

Adelaide to Melbourne											
Location	Sunday	Monday	Thursday	Friday							
Tintinara	Depart	0424	0422	0414	0422	Kawack	Depart	0900	0900	0900	0900
Coonambook	Depart	0453	0437	0429	0438	Belair	Depart	0924	0924	0924	0924
Tallem Bend	Depart	0511	0454	0447	0456	Mount Lofly	Depart	0936	0936	0936	0941
Murray Bridge	Arrive	0549	0539	0542	0537	Balhannah	Depart	0953	0953	0953	0958
	0551	0541	0544	0539	Mount Barker	Depart	0957	0957	0957	1002	
Mount South	Depart	0601	0553	0558	0552	Pelwood	Depart	1012	1012	1012	1017
Pelwood	Depart	0619	0613	0615	0613	Monarto South	Depart	1025	1025	1028	1031
Mount Barker	Depart	0634	0630	0632	0628	Murray Bridge	Arrive	1034	1036	1037	1041
Balhannah	Depart	0638	0634	0636	0631		Depart	1036	1038	1038	1042
Mount Lofly	Depart	0657	0654	0654	0649	Tallem Bend	Depart	1053	1055	1056	1100
Belair	Depart	0708	0706	0705	0703	Coonambook	Depart	1112	1113	1114	1116
Kawack	Arrive	0730	0730	0730	0730	Coonambook	Depart	1126	1128	1128	1132
						Tintinara	Depart	1142	1144	1144	1149
						Coombe	Depart	1152	1153	1154	1158
						Keith	Depart	1204	1205	1205	1211
						Winega	Depart	1217	1218	1219	1223
						Bordertown	Arrive	1228	1231	1230	1234
							Depart	1231	1232	1232	1236
							Arrive	1241CST	1242CST	1242CST	1246CST
							Depart	1311EST	1312EST	1312EST	1316EST

Leeor Loop	Depart	1317	1318	1318	1322	Winget Loop	Depart	1741	1742	1802	1737
Kaniva Loop	Depart	1331	1333	1333	1336	Inverleigh	Depart	1747	1750	1809	1740
Diapur Loop	Depart	1342	1344	1344	1348	Hesse	Depart	1757	1800	1819	1750
Salisbury Loop	Depart	1357	1358	1358	1402	Gheringhap Loop	Depart	1811	1812	1832	1802
Dimboola Loop	Depart	1412	1413	1414	1418	North Shore Geelong	Arrive	1821	1824	1842	1812
Dimboola	Arrive	1415	1416	1416	1420		Depart	1827	1832	1850	1821
	Depart	1421	1422	1422	1426	Manor Loop	Depart	1833	1857	1912	1853
Pimpinio Loop	Depart	1431	1432	1432	1436	Newport	Depart	1917	1922	1938	1918
Horsham	Arrive	1442	1444	1444	1448	Tottenham	Depart	1952	1951	1948	1954
	Depart	1446	1447	1448	1451	Dynon	Depart	1958	1957	1956	2001
Jung	Depart	1452	1453	1454	1457	Melbourne	Arrive	2010	2010	2010	2010
Murtoa Loop	Depart	1500	1502	1502	1506						
Murtoa	Depart	1504	1506	1506	1509						
Lubeck Loop	Depart	1514	1516	1516	1519						
Deep Lead Loop	Depart	1538	1538	1541	1535						
Great Western Loop	Depart	1552	1551	1554	1548						
Pyrenees Loop	Depart	1607	1607	1625	1602						
Ararat	Arrive	1609	1609	1626	1605						
	Depart	1612	1612	1629	1608						
Maroona	Depart	1626	1626	1643	1622						
Taiyoon Loop	Depart	1634	1634	1651	1630						
Vile Vile Loop	Depart	1700	1701	1721	1656						
Berrybank Loop	Depart	1721	1722	1742	1717						