

Lot 21

LOCOMOTIVES OF THE
SILVERTON
TRAMWAY

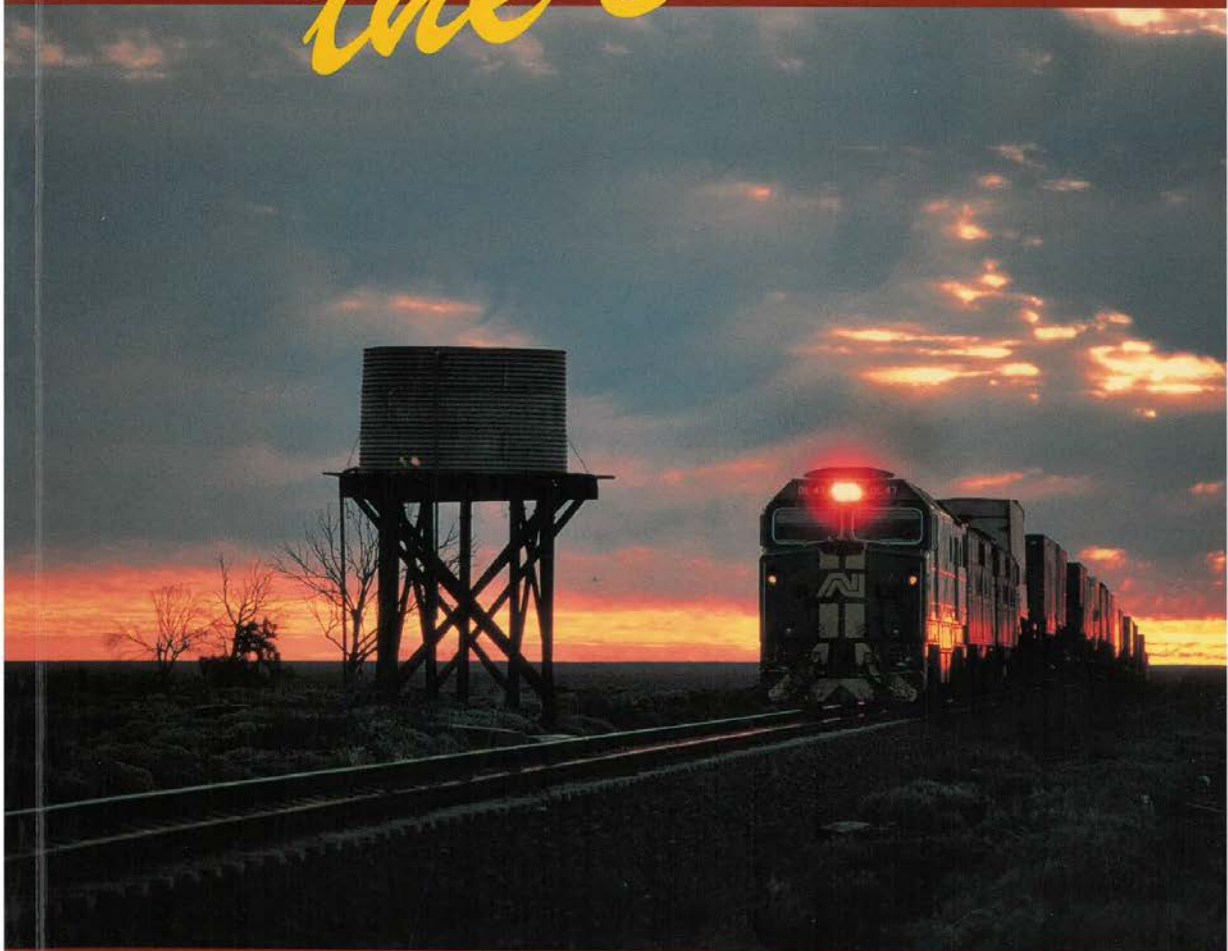


Steve McNicol

Lot 22

South Australian Diesel Pictorial

the 80s

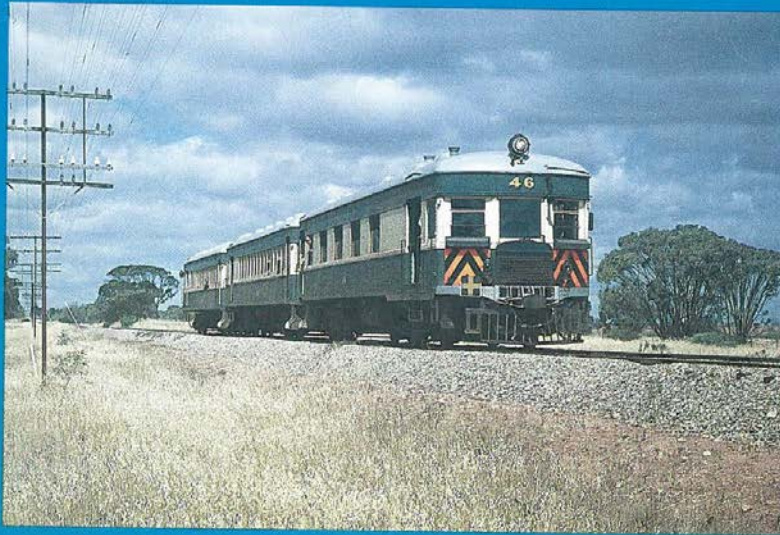


Port Dock Station
Railway Museum



Lot 23

**S.A.R.
RAILCARS
1920 — 1975**



Steve McNicol

Lot 24

“Rails Through Swamp & Sand”

A HISTORY OF THE PORT ADELAIDE RAILWAY



Malcolm Thompson

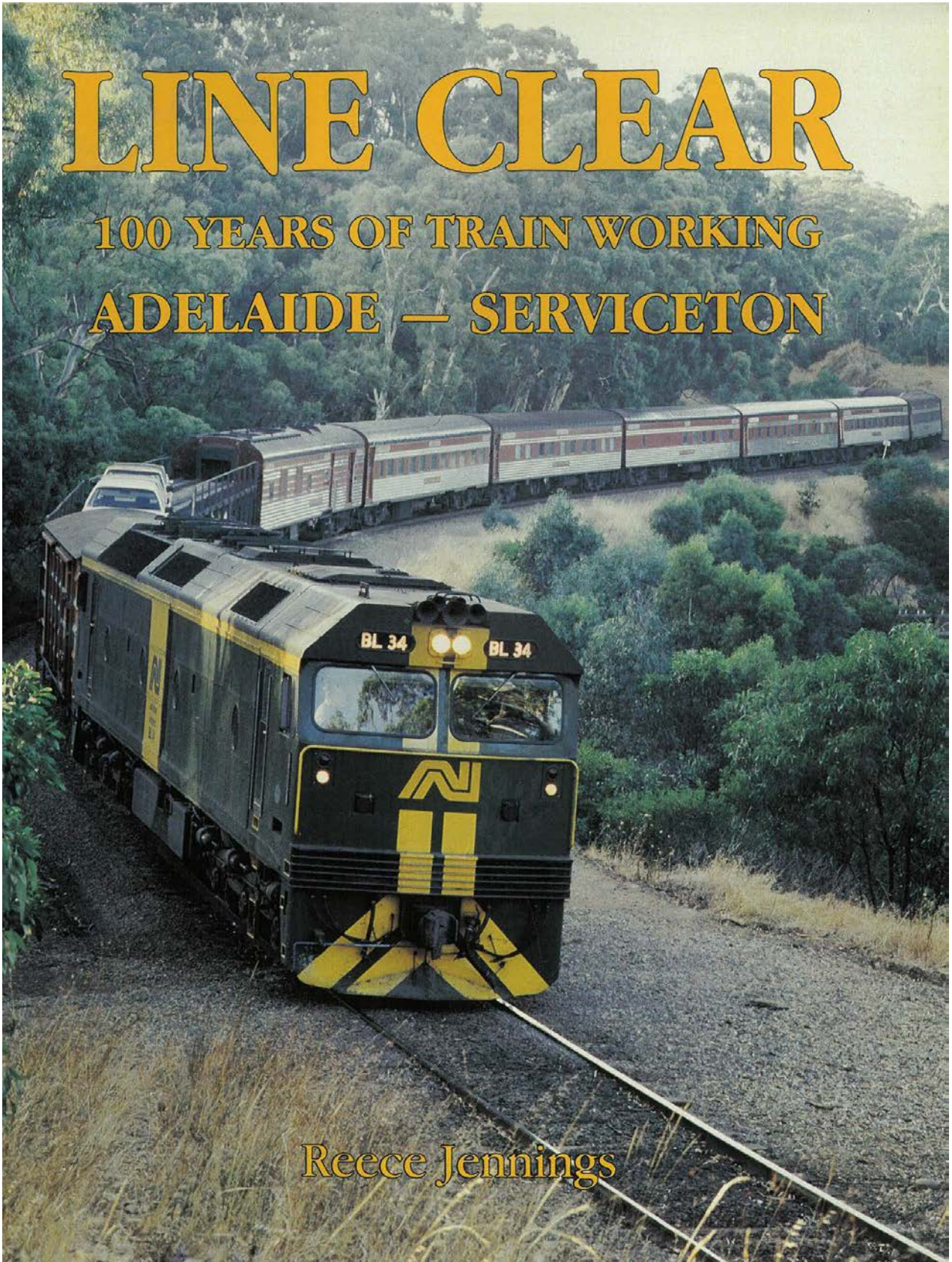
Port Dock Station Railway Museum

Lot 25

LINE CLEAR

100 YEARS OF TRAIN WORKING

ADELAIDE — SERVICETON



Reece Jennings

Lot 26

Little Coastal Railways of the Adelaide Plains

1873 — 1929

With particular reference to
MARINO, BRIGHTON, SOMERTON, GLENELG
WEST BEACH, GRANGE AND LARGS BAY



DAVID MACK

Lot 27

 **STEAM LOCOMOTIVES
AND RAILCARS OF THE
SOUTH AUSTRALIAN RAILWAYS**

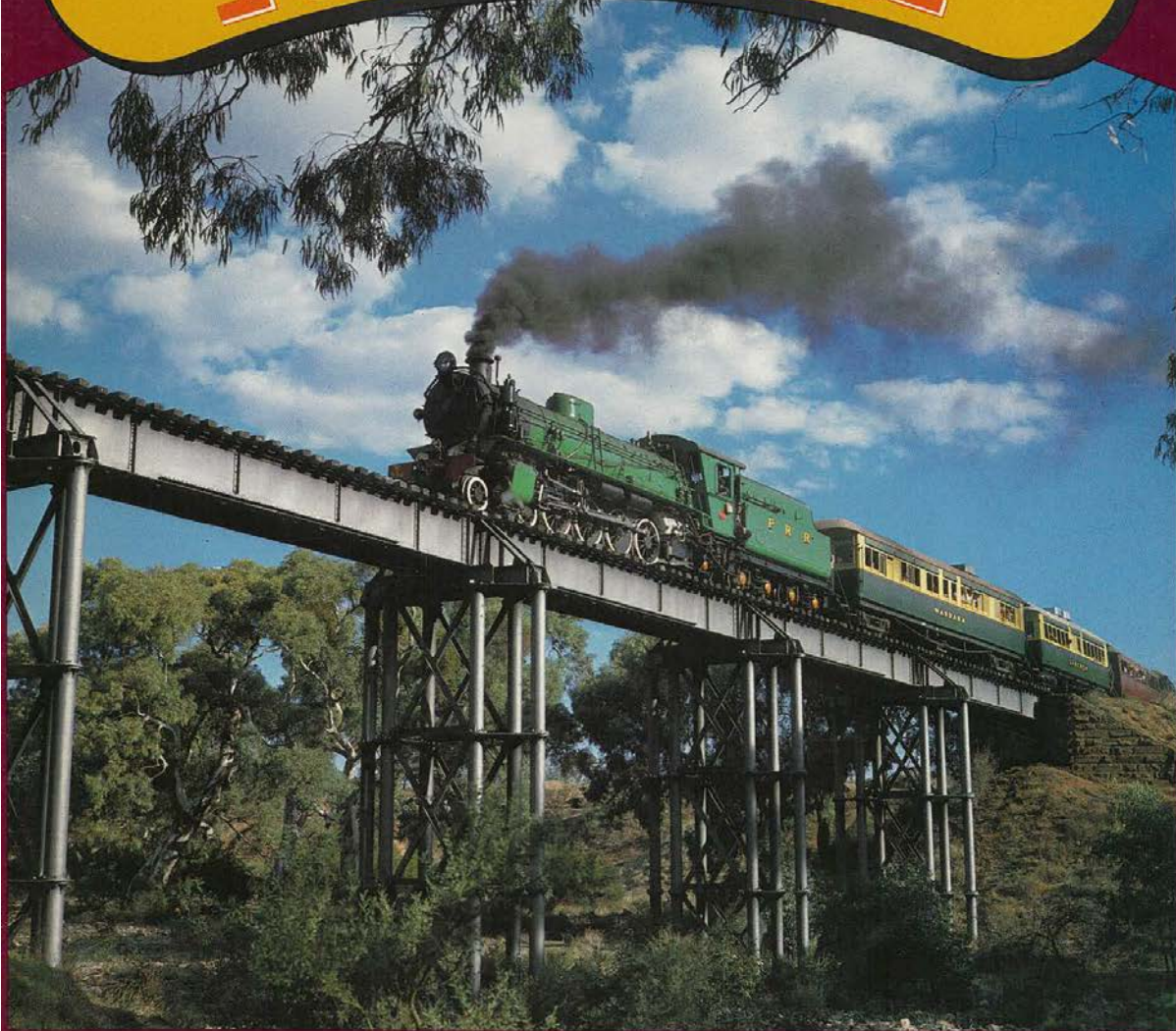


**R. E. FLUCK
R. SAMPSON
K. J. BIRD**

Lot 28

THE HISTORY OF

**PICHI RICHI
RAILWAY**



**Compiled by
Jack Babbage and Rodney Barrington**

Lot 29

Steam around
ADELAIDE



R RAILMAC PUBLICATIONS

Lot 30

THE VICTOR HARBOR RAILWAY LINE

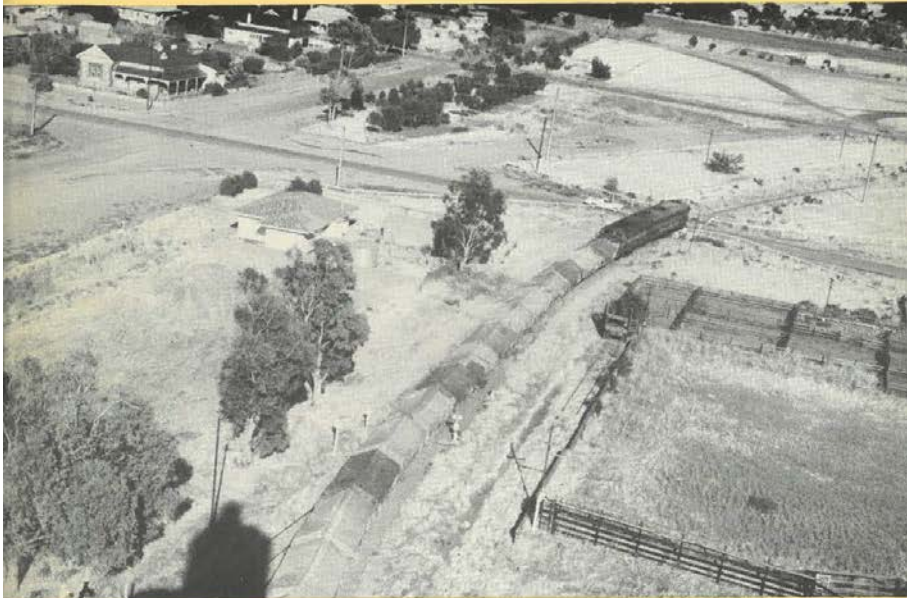
Pictorial Review



Australian Railway Historical Society

Lot 31

QUORN LINE ALBUM



Railmac Publications

Lot 32

Rails to the Top End



The Adelaide-Darwin Transcontinental Railway

Robin Bromby

Lot 33

THE BROAD WAY TO PORT PIRIE

1937 - 1982

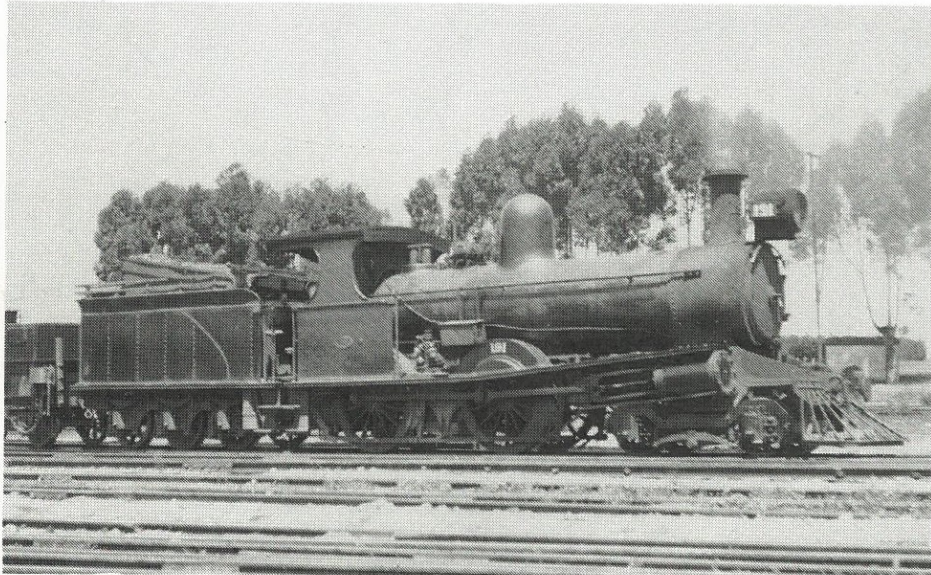


Australian Railway Historical Society

Lot 34

\$2.40

**S.A.R.
NARROW GAUGE
LOCOMOTIVE
REGISTER**



RAILMAC PUBLICATIONS

Lot 35

S.T.A. RAILCARS



RAILMAC PUBLICATIONS